

COMMUNITY SOCIAL PLAN 2010 - 2012



Disclaimer

Whilst every effort and care was taken in preparing Kiama's Social Plan to ensure accuracy, Kiama Council accepts no responsibility nor any liability for any error, omission, loss or inconvenience caused through the use of this document for whatever purposes.

CONTENTS

CONTENTS	3
INTRODUCTION	4
SOCIAL PLANNING IN KIAMA	5
CHARACTERISTICS OF THE MUNICIPALITY	6
GEOGRAPHY	6
MAP OF THE ILLAWARRA REGION.....	6
COMMUNITY PROFILE	7
PLANNING AREAS	7
BASIC DEMOGRAPHICS	8
KIAMA COUNCIL'S COMMUNITY SERVICES	13
SERVICE PROVISION	13
COMMUNITY SERVICES POLICY	15
NEEDS ASSESSMENT AND SUPPORTING DOCUMENTS	17
NEEDS ASSESSMENT.....	17
SUPPORTING DOCUMENTS	17
REVIEW OF 2004-2009 PLAN	21
CHILDREN	21
YOUNG PEOPLE	21
WOMEN	22
OLDER PEOPLE	22
PEOPLE WITH A DISABILITY	22
ABORIGINAL AND TORRES STRAIT ISLANDER PEOPLE	23
PEOPLE FROM CULTURALLY AND LINGUISTICALLY DIVERSE BACKGROUNDS	23
2010 – 2012 PLAN	24
CHILDREN	24
YOUNG PEOPLE	26
OLDER PEOPLE	28
PEOPLE FROM CULTURALLY AND LINGUISTICALLY DIVERSE BACKGROUNDS (CALD)	31
ABORIGINAL AND TORRES STRAIT ISLANDER PEOPLE	32
PEOPLE WITH A DISABILITY	33
WOMEN	35
REFERENCE LIST	37
LIST OF ACRONYMS	37
REFERENCES	38

INTRODUCTION

Kiama Municipal Council prepares a range of plans, some which are required by government legislation, others that are not. The preparation of a Social Plan has previously been a NSW Government requirement after the introduction of the Local Government (General) Amendment (Community and Social Plans) Regulation 1999, and is to be submitted to the NSW Department of Local Government every five years.

Over the past 12 months changes have been made that will see the integration of Council Social Plans into a new planning framework called Integrated Planning and Reporting Framework. This new framework will require all Councils, through legislation, to develop a 10 year Community Strategic Plan, a 4 year Delivery Program and a 1 year Operation Plan and Annual Report.

Throughout this new process it will be important for Councils to ensure that the values and social justice principles that underpin current Social Planning continue to be reflected in the new Integrated Planning structures. These principles include access, equity, participation and rights and are fundamental to good social planning and service delivery

Through its current provision of services and infrastructure, Kiama Municipal Council is committed to:

- Promoting fairness in the distribution of resources, particularly for those most in need.
- Recognising and promoting people's rights and improving the accountability of decision makers.
- Ensuring that people have fairer access to the economic resources and services essential to meeting their basic needs and improving their quality of life.
- Giving people better opportunities for genuine participation and consultation about decisions affecting their lives.

In the light of these new planning changes Kiama Council has committed to the implementation of the new Integrated Planning and Reporting framework by 2011. Consultation is currently underway for the development of the 10 year Community Strategic Plan which will incorporate much of the current requirements for the Social Plan.

In reviewing Kiama's current Social Plan it has been observed that much of what has previously been provided through the Plan is still relevant to today and will continue to be so into the immediate future. Therefore an interim Plan is provided to our local community and Department of Local Government as a bridging document until the new Community Strategic Plan is finalised in 2010.

While the seven target groups (children, young people, women, older people, people with a disability, Aboriginal and Torres Strait Islanders and Cultural and Linguistically Diverse communities) previously identified under the Social Plan legislation are not specified within the new framework it will be important that strategies developed within the new Community Strategic Plan are reflective of and inclusive of these, our most vulnerable members of our community.

Mario M Vallejos
Director of Community Services
mariov@kiama.nsw.gov.au
02 42320434
November 2009

SOCIAL PLANNING IN KIAMA

Council developed its first Social Plan in 1988, a second for the period 1999-2004 and the third current plan for 2004-2009 following the requirements of the Local Government Act.

The development of the 2004-2009 Plan included needs assessments for each of the target groups utilising both qualitative and quantitative methods commencing with the review of existing documents. Various Government and non-Government reports, studies, reviews, consultation results and plans were studied to obtain information on access and equity issues in the Kiama community.

Council also held community consultations with young people, older people, people with culturally and linguistically diverse backgrounds, Aboriginal people, children and families. These consultations were facilitated across the Municipality. The consultations involved either inviting the community to attend focus group meetings, or holding stalls and information centres at community functions.

Several separate questionnaires and surveys were designed and disseminated to families, young people, and people from culturally and linguistically diverse backgrounds across the Municipality investigating needs and priority issues specific to the people of Kiama.

Together with the community consultations and literature review, discussions were held with internal stakeholders. Council employees who work with and plan for the community were consulted, as they are a major point of contact for people already utilising Council's services. These stakeholders could identify areas of need and/or gaps in existing services.

The final stage of a needs assessment involved analysing the data found and identifying priority issues and areas of need. These priority areas and the comments made by the community were taken in account in the development of access and equity strategies for Council to consider.

In order to review the 2004-2009 Social Plan and develop an interim 2010-2012 Plan further research and consultation has been undertaken in the form of:

- Review of existing data collected by Council to date post 2004
- Youth Survey of students of Kiama High School
- One on one interviews with 12 leading advocates within the Kiama Municipality
- Broad ranging community survey

The findings of this additional consultation have reinforced the existing data regarding needs and issues of the Kiama community.

CHARACTERISTICS OF THE MUNICIPALITY

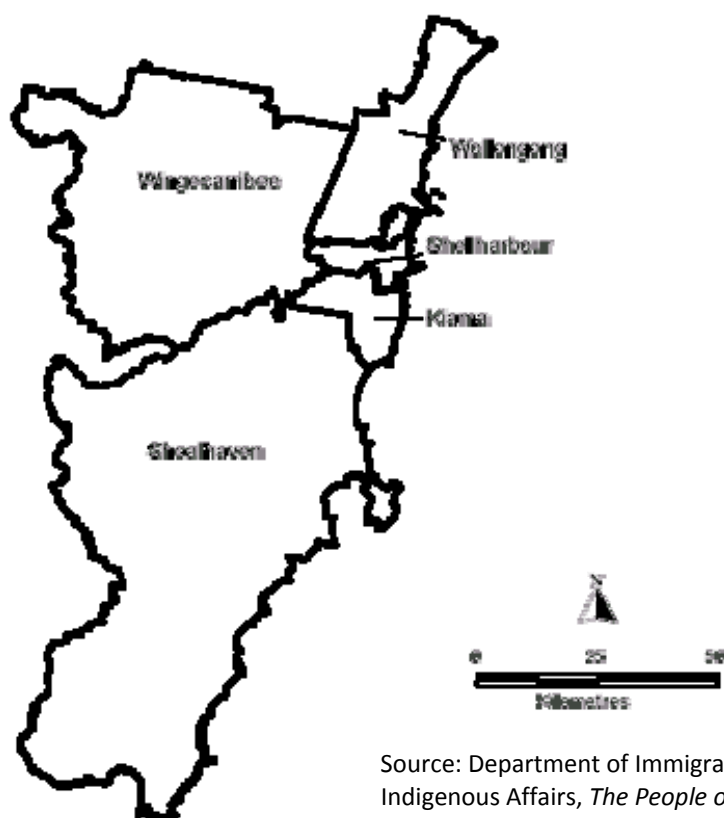
Geography

The Kiama Local Government Area is located on the South Coast of New South Wales and is approximately 120 kilometres South of Sydney. It is surrounded by the Shellharbour LGA in the north, the Wingecarribee LGA in the northwest, the Shoalhaven LGA in the south and the Tasman Sea to the east. The Kiama Municipality is the smallest local government area in the Illawarra region, with an area of approximately 256 square kilometres. It is essentially a rural community, with approximately 74% of the region zoned for this use (KMC, 2003 SoE).

Kiama is unique in that it possesses a diverse range of physical environs including beaches, rainforests and open rural landscapes with a predominantly coastal population. Environmental features of special significance include extensive native and rainforest environments and National Park areas, the plateau, the escarpment, the valleys of Jamberoo, Foxground, Rose Valley and Willowvale, and the large coastal fringe and estuary system.

The coastal fringe is characterised by a few wetland areas and a number of beaches separated by a series of volcanic and sandstone headlands. The narrow hilly coastal fringe widens out south of the Saddleback Ridge which acts as a major barrier to separate the southern part of the Municipality from the central and northern urban areas.

Map of the Illawarra Region



Source: Department of Immigration and Multicultural and Indigenous Affairs, *The People of Australia*, CD-ROM, Statistics from the 2001 Census

COMMUNITY PROFILE

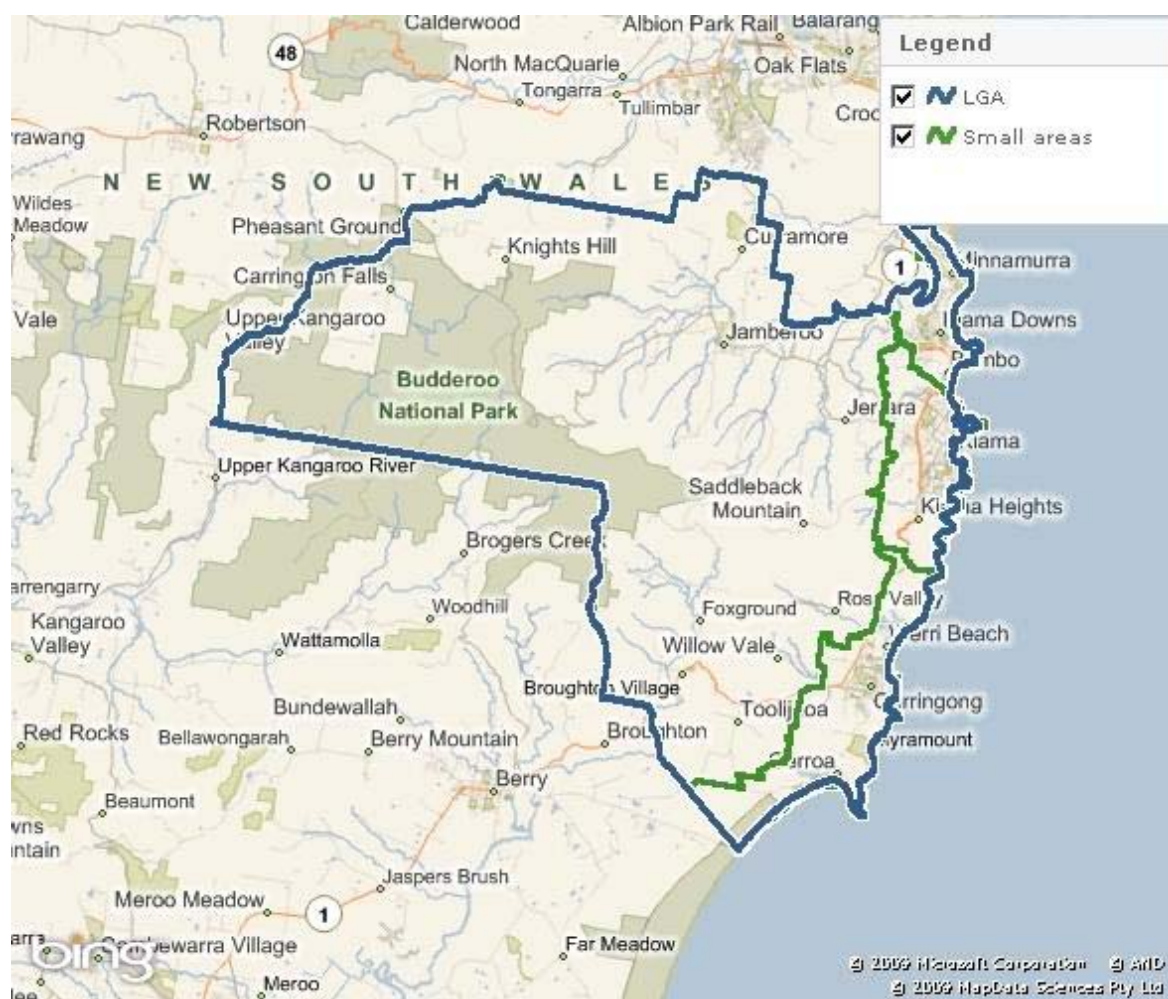
To date the Local Government (General) Regulation 1999 requires all Councils in New South Wales to develop a Social/Community Plan and report on identified strategies and outcomes on access and equity activities in their annual reports.

As part of this Plan the NSW Department of Local Government *Social and Community Planning and Reporting Guidelines* require Councils to include a demographic profile of the community.

This demographic profile provides some broad information about the Kiama Municipality compiled and derived from the Australian Bureau of Statistics, in particular the 2006 Census. It should be noted that some figures in the profile for overall population counts may differ as data was counted using different variables for various purposes (comparability of data), and in other instances, figures on Estimated Resident Population and Population Projections. Non-sampling errors should also be considered. Data taken from ABS Census 2001 tables exclude overseas visitors unless otherwise stated.

Further demographic data can be accessed through Kiama Council's online Community Profile website at <http://profile.id.com.au/Default.aspx?id=296>

Planning Areas



Urban development and settlement patterns in the Kiama LGA make obvious the definition of planning areas for consideration of provision of services and facilities.

Taking into account ABS Census subdivision collection districts, and identifiable geographic and urban areas, the planning areas have been defined as follows:

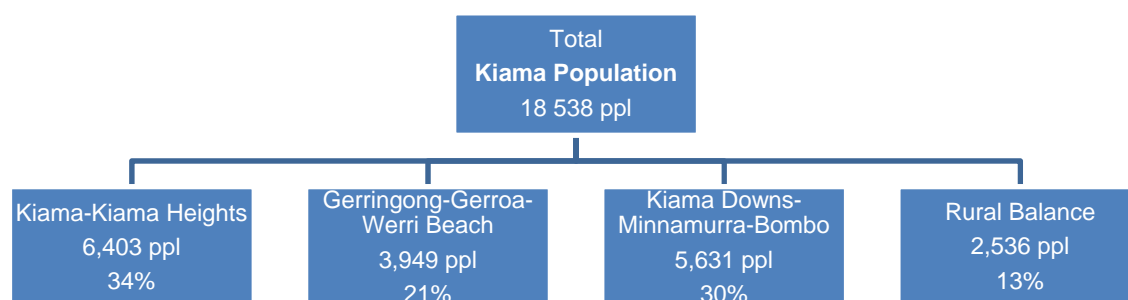
- *Kiama Township* – includes the Central Business District along the coastal strip.
- *Rural Kiama* – is bound by Kiama Township in the east, Fountaindale Rd in the West and Minnamurra River in the north.
- *Minnamurra/Kiama Downs* - including geographical areas north of the railway crossing off the Princes Highway and east of the Princes Highway in the far north of the Municipality.
- *Gainsborough* - bound by the area west of the Princes Highway to Minnamurra in the North and Spring Creek to the south.
- *Rural Jamberoo* - directly west of Minnamurra and Kiama Downs coastal areas, bound by Saddleback and Stockyard Mountains.
- *Jamberoo* - includes Jamberoo village and is bound by Drualla Rd in the west, Allowrie St in the east and Minnamurra River to the north.
- *Rural Gerringong* - composed of the area south-east of the Princes Highway from the Omega crossing and bound by the township of Gerroa to the south.
- *Gerringong* - village to the south, bound by the Rural Gerringong planning area.
- *Gerroa* - directly south of Rural Gerringong and is bound by Seven Mile Beach and the escarpment to the West.

The population of these planning areas is concentrated mainly in the urban coastal townships.

Basic Demographics

Population Growth

The most recent Census (2006) indicates that there were 18 538 people living in the Kiama area on Census night.



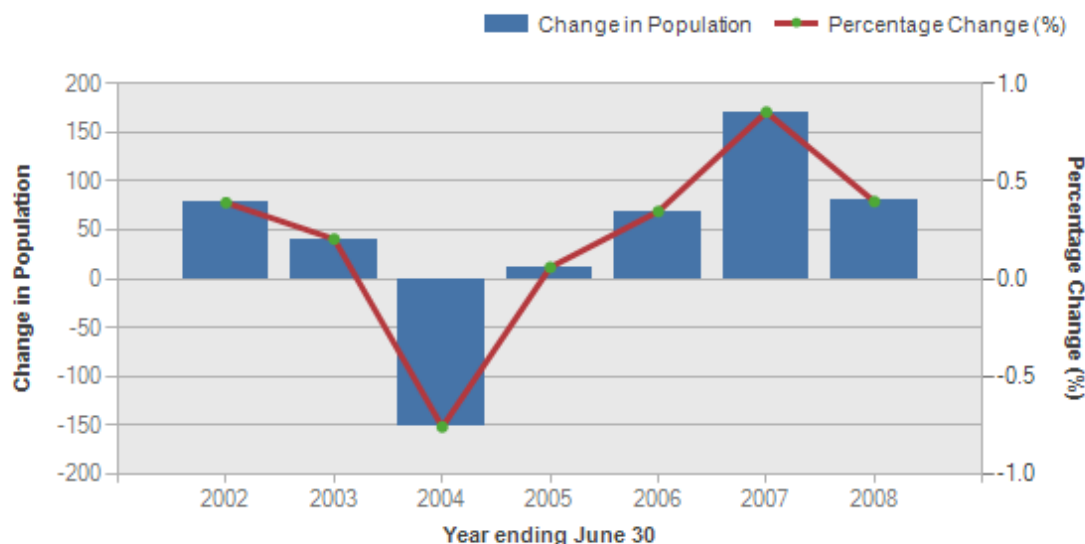
The Kiama Township has the largest population centre in the Municipality, housing 6403 (34.0%) people. With Kiama Downs/Minnamurra, Gerringong/Gerroa and the Rural Balance reducing in size respectively.

Population projections indicate that the population of Kiama in 2014 it will be 22,300, and the projections for 2019 is 23,115 persons.

Although there has been a constant increase in numbers, the percentage of population growth has declined over the last 20 years. This can be seen in Table 1.

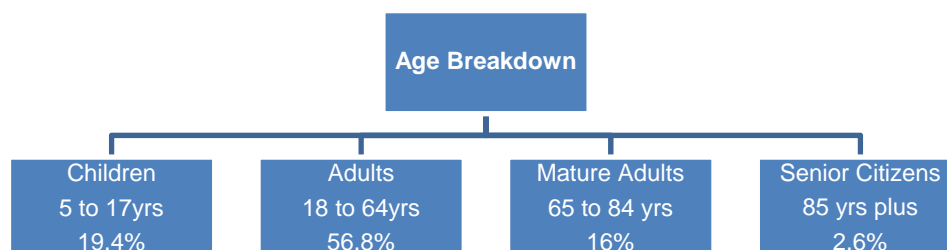
Comparing the percentage of change in population between Kiama, the Illawarra, and New South Wales, Kiama has had the largest growth in population over the 10 year period between 1991 and 2001. However the percentage change dropped between 1991-1996 and 1996-2001, whereas figures from the Illawarra and NSW show a stabilisation of growth rates.

Change in Estimated Resident Population, Kiama Municipal Council



Source: Australian Bureau of Statistics, 3235.0 - Population by Age and Sex, Regions of Australia, 2007

Age Breakdown



Analysis of the age structure of Kiama Municipality in 2006 compared to the Illawarra Statistical Division shows that there was a similar proportion of people in the younger age groups (0 to 17) but a larger proportion of people in the older age groups (60+).

Overall, 24.6% of the population was aged between 0 and 17, and 24.1% were aged 60 years and over, compared with 24.5% and 22.0% respectively for the Illawarra Statistical Division.

The major differences between the age structure of Kiama Municipality and the Illawarra Statistical Division were:

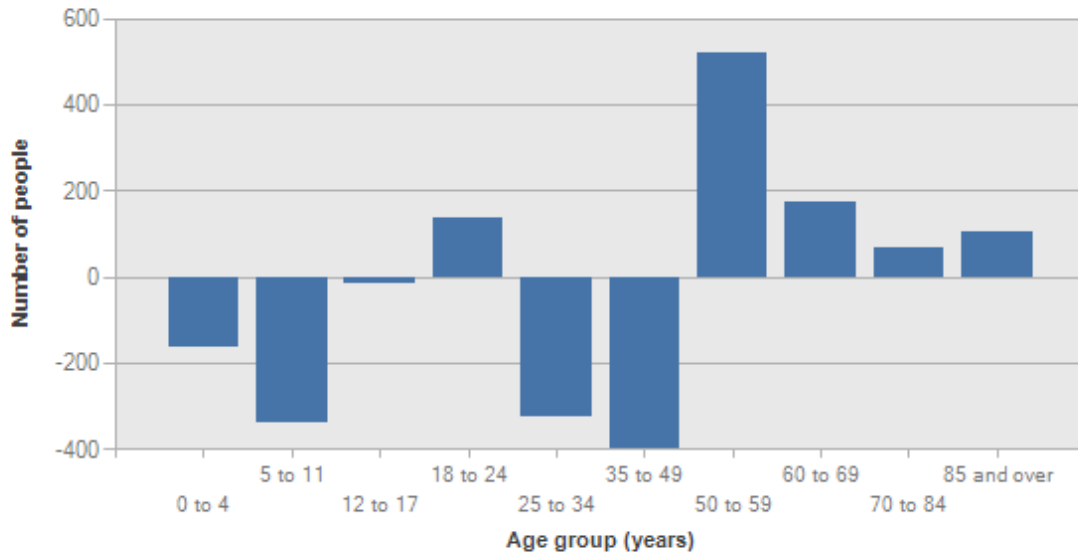
- A *larger* percentage of 50 to 59 year olds (14.6% compared to 12.8%);
- A *larger* percentage of 12 to 17 year olds (10.2% compared to 8.8%), and;
- A *smaller* percentage of 25 to 34 year olds (7.9% compared to 11.2%).

The largest changes in age structure in this area between 2001 and 2006 were in the age groups:

- 50 to 59 (+520 persons);
- 35 to 49 (-396 persons);
- 5 to 11 (-340 persons), and;
- 25 to 34 (-322 persons).

(From ID Community Profile, <http://profile.id.com.au>)

Change in age structure of Kiama Municipality, 2001 to 2006 (Enumerated data)



Source: Australian Bureau of Statistics, 2006 and 2001 Census of Population and Housing (Enumerated)

Housing and dwelling structure

The Household and Family structure of the population is an indicator of an area's residential role and function (relating to the types of housing markets attracted to the area). It is usually indicative of the area's era of settlement and provides key insights into the level of demand for services and facilities (as most services and facilities are age- and household type-specific).

Analysis of the **family types** in Kiama Municipality in 2006 compared to the Illawarra Statistical Division shows that there was a larger proportion of couple families with child(ren) but a smaller proportion of one-parent families.

Overall, 46.3% of total families were couple families with child(ren), and 12.4% were one-parent families, compared with 43.1% and 16.4% respectively for the Illawarra Statistical Division.

The largest changes in family types in Kiama Municipality between 2001 and 2006 were:

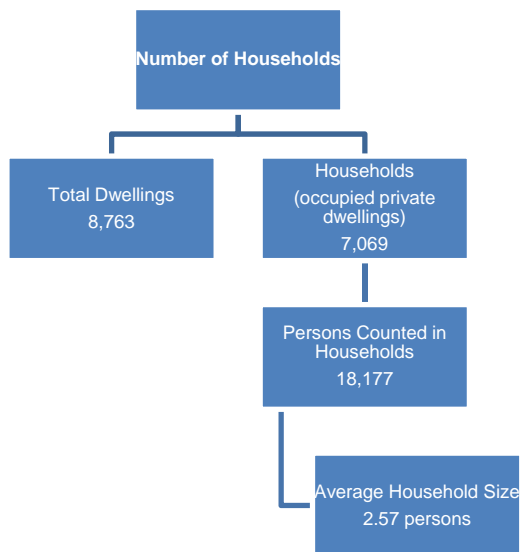
- Couples with child(ren) 15 years and over (+144);
- Couples without child(ren) (+93), and;
- Couples with child(ren) under 15 years (-249).

Comparing **Household types** between Kiama Municipality and the Illawarra Statistical Division in 2006 reveals a larger proportion of Family households, but a smaller proportion of lone person households. Family households accounted for 74.4% of total households in Kiama Municipality while lone person households comprised 21.8%, (70.4% and 23.7% respectively for the Illawarra Statistical Division).

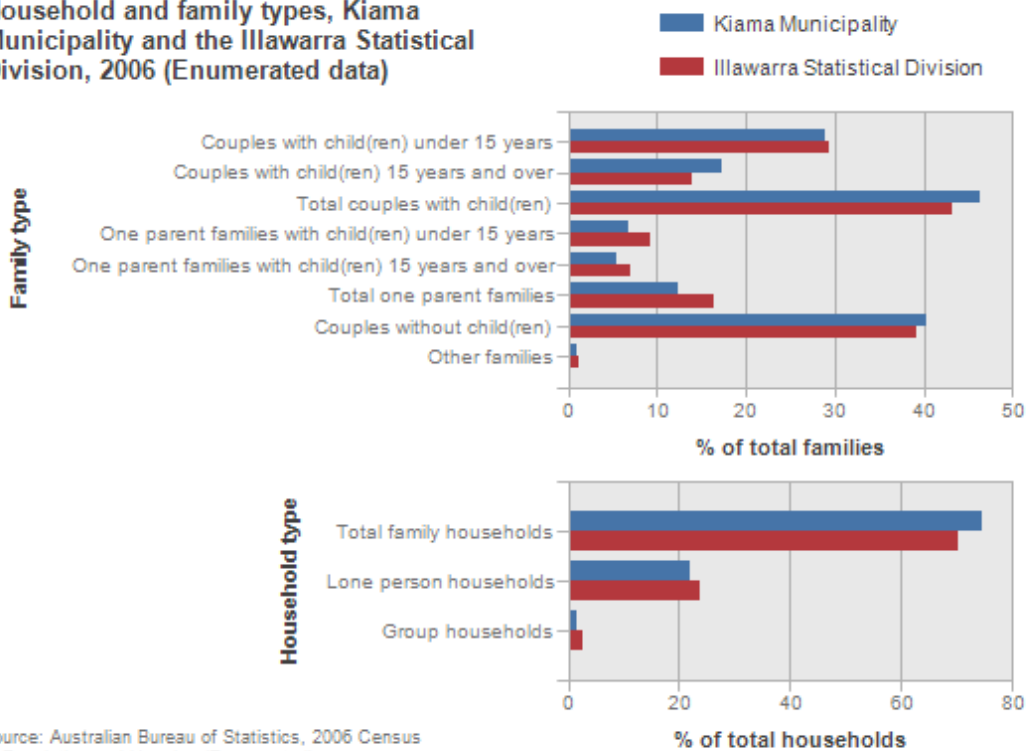
Between 2001 and 2006 in Kiama Municipality, there was an increase in the number of Family households (1), an increase in lone person households (85) and an increase in group households (20).

(From ID Community Profile, <http://profile.id.com.au>)

In the 2006 Census there were 7069 households in the Kiama LGA.



Household and family types, Kiama Municipality and the Illawarra Statistical Division, 2006 (Enumerated data)



Economy

The current status of the economy of the Kiama Local Government Area strongly focuses upon the following industries:

- Tourism: contributing \$70 million per year to the local economy
- Retailing: contributing \$65 million per year.
- Building: contributing to \$34 million per year.
- Dairying: contributing \$15 million per year.

(KMC, 2003, E&E S)

Although the number of retail establishments (196) is less than construction (455) and property and business services (278), the retail industry employs 1,137 people (14% of Kiama's employment).

Property values for the region have seen a steady increase over the last year (June 02 – June 03), with a change in the Median property values for housing increasing 24.3%. Medium density housing and land values have also increased (IRIS, Profile Illawarra, 2003).

The Kiama LGA is the only local government area in the region to have seen an increase in housing approvals over the last financial year (up 18.6%).

The Municipality is currently witnessing substantial developments in infrastructure. Works are under way for the North Kiama Bypass project, and the RTA is implementing a bridge across the Minnamurra floodplain. The Department of Education is currently in Stage 1 of upgrading Kiama High School, and designs are currently under way for the new Library extension building.

The review of the Kiama Local Environment Plan (LEP) 1996 (to commence 2004/05) will not only address the land use zones that indicates what is permitted or restricted within certain areas of land and what conditions apply, it will also need to determine what objectives should be developed to balance demands for growth as well social, environmental and economical considerations.

KIAMA COUNCIL'S COMMUNITY SERVICES

Service Provision

Council has been involved in a number of community services initiatives for over half a century. The following timeline demonstrates the progression of community service delivery by Council over the years.

Kiama Council Community Services Timeline

1953	Library Services
1969	Home Nursing Services
1978	Youth Training Program
1979	Blue Haven Retirement Village
1981	Community Worker
1986	Community Projects Officer
1988	First Social Plan
1990	Council Community Services Department

Council Community Services programs:

Youth Services

- Youth referral, recreation, activities and information

Cultural Services

- Library services, resources and information
- Cultural development and community arts
- Cultural and Youth Arts Grants

Community Development and Planning

- Community development programs
- Social planning and information
- Community Builders NSW

Community Support and Development

- Aged services planning and information
- Disability services planning and information

Illawarra In Home Support

- Community options, including CALD and dementia specific case management
- Community transport
- Domestic assistance
- Social Support and Dementia Monitoring
- Respite Services
- Community aged care packages
- Centre based day care
- Home Maintenance

Council has also been very pro-active before and after the development of its first Social Plan in the provision of neighbourhood and community centres/halls. The numbers of these facilities are well

above the average for Local Government provision where they would range from one small neighbourhood/community centre per 10,000 people to a large facility per 40,000 people.

Existing facilities of Council in the Municipality:

North Kiama

- North Kiama Neighbourhood Centre

Kiama Central

- Kiama Community (HACC) Centre
- Kiama Youth Centre
- Hindmarsh Park Girl Guide (Children) Cottage
- Showground Pavilion
- Kiama Old Fire Station Community Arts Centre

Jamberoo

- Jamberoo Youth Hall
- Jamberoo School of Arts (Municipal Hall)

Gerringong/Gerroa

- Gerringong Town Hall
- Gerroa Neighbourhood Centre
- Werri Beach Progress Hall
- Gerringong Scout Hall

Despite the provision of community facilities well above the numerical standards and comprehensive range of programs quite unique for a Municipality the size of Kiama, the demand and expectations from some sectors of the community are very high.

Council is conscious that maintaining a balanced budget in the future will become increasingly difficult with the current constraints placed on its revenue raising capabilities. Council will need to continue to review and monitor its operations and implement measures to ensure an appropriate balance between revenue and expenditure.

Also, the Department of Local Government has introduced mandatory financial reports such as Special Schedule 7, which monitors Council's ability to maintain the community's infrastructure assets. Financial Note 13, Statement of Performance Measurement highlights a number of financial performance indicators to assess financial performance and help measure fiscal adequacy in the short to medium term.

Therefore, Council has a fiscal responsibility to all ratepayers and residents of the Municipality and must balance these responsibilities objectively and with equity.

Council's community facilities can cater well for the future since environmental considerations, growth and land available or proposed for urban release will only need to provide for a population estimated of around 23,000 for the next 15 years.

Taking into account the above and community needs, the main priorities for community services infrastructures are an expansion of Library services to include building extensions for Gerringong and a better utilisation of the Kiama Community Centre for a more efficient and affective delivery of support services under one location. A review of existing Council community buildings to achieve a more appropriate and greater use/utilisation, will also be required.

Community Services Policy

With the development of its first Social Plan in 1988 Council adopted a Community Services Policy and this was amended in 1999, 2004 and 2005 following the implementation of its Social Plan.

Aim

To enhance the quality of life, independence and well-being of residents of the Municipality; and to facilitate opportunities for members of the community to participate in the planning, development, provision and coordination of community services.

1. Principles

- 1.1 Council recognises that an effective social planning process in the provision of community services should aim at meeting the needs of all residents which is based on the principles of access, equity and social justice.
- 1.2 Council recognises the role of Local Government in maintaining the quality of life of the Community through the coordination and planning of Community Services; as well as acting as an advocate, catalyst and in providing development support for community based and locally controlled human services.
- 1.3 Council also recognises that it functions in a Regional context and as such it has a role of supporting, assisting and providing cooperation between all Government departments and Councils whose decisions on Community Services provision affect both the local area and the Illawarra Region.
- 1.4 Council further recognises that the demand for Community Services will increase at a rate exceeding the capacity of local government and community resources to supply those services, thus economic constraints must be recognised.
- 1.5 Council will take into account these principles and the objectives outlined below in the implementation of programs to maximise the quality of life of its residents with particular reference to the residential environment and the most effective provision of Community Services and facilities.

2. Objectives

- 2.1 To develop, implement and review a Social/Community Plan for the Municipality in accordance with Council's Community Services Policy and the Local Government Act.
- 2.2 To plan for an equitable distribution of Community Services and facilities throughout the Municipality with priority given to those sections of the community with greatest identified needs.
- 2.3 To promote the coordination and sharing of resources in the Municipality in an effort to avoid unnecessary duplication and maximise efficient use of services and facilities.
- 2.4 To advocate on behalf of the local community to other levels of Government for funding and service provision.
- 2.5 To encourage provision of services and facilities, which are community based and locally controlled.

- 2.6 To ensure that Community Services programs are meeting community needs by implementing evaluation mechanisms for each program.
- 2.7 To provide development support to community organisations based on priority needs for the Municipality.
- 2.8 To participate in the provision of services where there is an established need and this has not been able to be met by other organisations.
- 2.9 To actively seek the participation in joint community services programs with other local governments in the region
- 2.10 To maximise the utilisation of State and Commonwealth Governments funding for the provision of different Community Services and facilities, by attracting funding to the Municipality and achieving cost effective use of funds.
- 2.11 To review any program that has been discontinued from other levels of Governments funding for the provision of different Community Services and facilities, by attracting funding to the Municipality and achieving cost effective use of funds.
- 2.12 To encourage citizens participation and consultation on community programs, services and facilities.
- 2.13 To provide information to residents on Community Services and resources.
- 2.14 To promote and organise surveys, forums and research initiatives to assist in the identification of community needs and services.
- 2.15 To encourage multi-purpose use of public buildings and involvement of user groups in the management of these facilities.
- 2.16 To promote cooperation and achieve integration of social, cultural, economic and environmental planning.
- 2.17 To participate in local, regional and state planning forums and consultative processes which relates to the provision of services and facilities for the Municipality.
- 2.18 To encourage multi-cultural awareness and cross-cultural sensitivity in the Municipality.
- 2.19 To encourage an awareness and recognition of Aboriginal culture and heritage in the Municipality.
- 2.20 To develop innovative ventures to attract further funding to the Community and assist with the provision of services for the Municipality.
- 2.21 To tender for and become involved in the provision of community services in the region where Council expertise is assessed to be capable of providing such services and these can be self sustainable.

Original adopted 1988
Amended 1999
Amended 22 June 2004
Amended 15 November 2005

NEEDS ASSESSMENT AND SUPPORTING DOCUMENTS

Needs Assessment

A Needs Assessment aims at utilising various forms of resources to gain information on areas of unmet need across a range of priority issues in the Kiama Local Government Area. Council has used both qualitative and quantitative methods, including focus group consultations, questionnaires and literature reviews to investigate the barriers faced by the seven target groups in accessing services. Together with data from the Community Profile, a variety of documents, statistics, studies, consultations and social trends were analysed and carried out with the purpose of gaining the most reliable and valid information about the various issues, concerns and needs of the community of Kiama.

Supporting Documents

The following Council, Government and non-Government reports were considered and reviewed as part of the needs assessment process for the seven target groups in the Social/Community Plan.

Kiama Municipal Council, *Community Facilities Study*, 2001

This report was authored by the community services department and examines current demographics and current and future trends, to examine the need for the planning and provision of community facilities.

Kiama Municipal Council, *Cultural Needs Assessment Study*, June 2002

The Cultural Needs and Assessment Study was prepared by the Cultural Development Officer and involved surveying the community and reviewing Council's existing records and plans and provides a snapshot of the communities cultural needs. The study achieves this through determining which cultural and recreational facilities exist and their purpose and reviewing the functionality and level of usage for each facility.

Kiama Municipal Council, *Community Services: An Overview and Directions for the New Millennium*, March 2001

This document provides an overview of Council's development of Community Services particularly over the last 20 years. It outlines the main issues effecting services today, with general information about directions for the future.

Kiama Municipal Council, *Municipal Health Plan*, 2001-2004

The main aims of this plan were to improve the health, well-being and quality of life for all residents and visitors, to protect and enhance the environment for the benefit of present and future generations and to promote ecological sustainable development. These aims were to be achieved through the formulation of strategies and action plans, and the fostering of inter-sectorial collaboration and strategic partnerships.

The focus of the plan recognises the interaction of environment, community and economy, but the need for an integrated approach to planning as a means of creating healthy local areas.

Kiama Municipal Council, State of the Environment Report, 2003

Council's Environmental Services Department undertook the State of the Environment Report. The broad aims and objectives are to educate and inform the community, Council, Government and industry about the condition of our environment; assess the progress towards achieving environmental goals and standards; assess the progress towards achieving ecologically sustainable development, and; identify important environmental issues.

Ecological Sustainable Design (ESD) for Kiama Municipal Council, *Kiama Town Centre Charrette*, July 2002

This report was prepared to explain and accompany the public exhibition and the outcomes of the Kiama Charrette. In this report, ESD explains the challenges and decisions, which they believe Kiama will and must face. It also provides design solutions and responses to the present and future problems facing Kiama.

Kemp, D. for Kiama Municipal Council, *Kiama: Economic and Employment Strategy*, March 2003

This document was aimed at helping Council, the local communities and business groups to position Kiama to minimise any emerging economic and employment difficulties, create a prosperous local economy that meets local community aspirations and enable Kiama to contribute meaningfully to the regional economy. In doing so, six key economic strategies are recommended.

Elberich, A. for the Illawarra Filipino Women's Group, Profile of the Filipino Community (Wollongong, Shellharbour and Kiama), 2002

The Illawarra Filipino Women's Group (IFWG) conducted surveys and community consultations with (mostly) Filipino women across the Illawarra region. The objectives of conducting this study was to identify issues and need of Filipino women in the Illawarra region, to assess services and facilities, and the awareness of them, to investigate ways of improving service delivery, and to identify strategies to combat isolation.

The survey and consultation for Kiama included not only Filipino women – it also gave opportunities for women of all different cultural backgrounds to participate.

Gerringong Community Services Group, 2003, Submission to Kiama Municipal Council for the 2004-2009 Social/Community Plan.

The Gerringong Community Services Group (GCSG) carried out a Community Needs Study. With a sample of 305 residents, the aim of the survey was to investigate the main needs/issues and priority areas for the people from Gerringong, Gerroa and Gerringong rural, and use the findings to form a basis for submission to the Social Plan.

The GCSG is advocating for the development of a multi-purpose community centre and youth facility for Gerringong, and the improvement of already existing community services and facilities for the people of Gerringong/Gerroa.

Illawarra Regional Information Service, Kiama Strategic Futures: Residents Survey (Draft Report), July 2002

IRIS conducted a phone survey of 862 residents from the Kiama Local Government area. The aims of the survey were to research residents' attitudes and to gain input into Council's development and provision of services.

Kiama Community College, *Equity Research Project*, October 2003

The Kiama Community College provides education and training in a variety of disciplines to people of all ages across the community.

The aims of the report was to ascertain groups of disadvantage in the community and to assess present or future training needs and to deliver more opportunities to these particular groups.

Library User Survey 2007

A survey of Library users to determine quality, frequency and need of services

Business Retention and Expansion Survey 2004

This study was conducted from July- September 2004 with the purpose of gauging the level of business confidence in the municipality and the generate a 'snapshot' of current business activities. Approximately 800 survey's were distributed, with 97 completed survey's received from all areas of the Kiama local government area

LEP Community Survey 2003 (Gerringong/Gerroa)

This study was conducted to review the existing planning controls and to prepare a new Local Environmental Plan (LEP) and a series of Development Control Plans (DCPs) to guide development for the next two decades. The community was invited to participate in three ways; by responding to a survey, attending a Public Information Evening, and/or by participating in a Community Workshop.

LEP Community Survey 2003 (Minnamurra, Kiama Downs, Bombo)

This study was conducted to review the existing planning controls and to prepare a new Local Environmental Plan (LEP) and a series of Development Control Plans (DCPs) to guide development for the next two decades. The community was invited to participate in three ways; by responding to a survey, attending a Public Information Evening, and/or by participating in a Community Workshop.

LEP Community Survey 2003 (Kiama and Kiama Heights)

This study was conducted to review the existing planning controls and to prepare a new Local Environmental Plan (LEP) and a series of Development Control Plans (DCPs) to guide development for the next two decades. The community was invited to participate in three ways; by responding to a survey, attending a Public Information Evening, and/or by participating in a Community Workshop.

LEP Community Survey 2003 (Jamberoo)

This study was conducted to review the existing planning controls and to prepare a new Local Environmental Plan (LEP) and a series of Development Control Plans (DCPs) to guide development for the next two decades. The community was invited to participate in three ways; by responding to a survey, attending a Public Information Evening, and/or by participating in a Community Workshop.

Youth Survey 2009

Survey of over 150 students at Kiama High School exploring there positive and negative experiences of living in the Kiama local government area

Advocate Interviews 2009

Undertaken as part of the consultation for the new Integrated Planning and Reporting Framework, this involved one on one interviews with 12 leading advocates within the Kiama Municipality exploring positive and negative experiences of living in the Kiama local government area and the dreams and nightmares for the future of the Municipality.

Community Survey 2009

Undertaken as part of the consultation for the new Integrated Planning and Reporting Framework, this is a broad ranging community survey covering issues of community services, community infrastructure, environment, local economy and Council governance. Over 500 completed surveys received from across all areas of the local government area.

REVIEW OF 2004-2009 PLAN

Kiama Council has been committed to developing a Social/Community Plan every five years to assist Council in taking into account the needs of its community and to provide or advocate for appropriate and accessible services and facilities for the benefits of the whole community.

The Social/Community Plan 2004 – 2009 examined the needs of residents in the Kiama Local Government Area with particular reference to the seven mandatory target groups as required by the Local Government (General) Amendment (Community and Social Plans) Regulation 1999.

Access and equity achievement reporting were provided to the Department of Local Government on a yearly basis as part of the Local Government Act of requirements. The following is a review of Council's achievements as at 30 June 2009 in relation to access and equity activities and strategies from the Social/Community Plan 2004-2009.

Children

There were 7 objectives as stated in the 2004-2009 Social/Community Plan.

To meet these objectives there were 17 strategies. Of these, 12 were achieved in full, 5 were partially achieved.

Included in the strategies met were: Up to date information available, liaison with Illawarra Area Health, implementation of the Health Plan, Implementation of Road Safety Strategy, funding of new and upgrading of playgrounds, provision of childcare and preschool facilities, library and literacy based activities for children, employ and economic development officer, employ part time and casual personnel.

Strategies partially achieved were; advice to providers, consultations and surveys, provide information on standards and guidelines for childcare, this has primarily been due to the discontinuation of funding to the relevant staff position.

Young People

There were 6 objectives for young people in the previous Social/Community Plan.

To meet these objectives, there were 23 strategies. Of these, 18 were achieved in full, 4 were partially achieved, and one was not yet achieved.

Included in the strategies achieved in full were: programs of Council's Health Plan, information and referral, drug and alcohol forums, drug educational resources at the Library, promotion of Kiama Youth Centre, outreach services and programs, increase in youth services, consultations, young people aware of library services, advocate with Centrelink, online information, lobby for transport services, provide community transport to events, update job board, resume assistance, work with police, road use community education,

Strategies partially achieved were: proactive partnerships with mental health services, review LEP, foster links with educational institutions, lobby for greater police resources in area. The one strategy not achieved was the lobby for better services for young people outside of Kiama town.

Women

There were 4 objectives for women in the 2004-2009 Social/Community Plan.

To meet these objectives, there were 8 strategies . Of these, 5 were achieved in full, 4 were partially achieved and 1 was not yet achieved.

Included in the strategies achieved in full were: provide services that support women's careers, training opportunities, programs to younger women, mental health awareness.

Strategies that were partial achieved included: implementing the Health Plan, develop a community safety program, drug and alcohol forums.

Strategy not yet achieved was to address social isolation,

Older People

There were 7 objectives for older people in the 2004-2009 Social/Community Plan.

To meet these objectives, there were 20 strategies. Of these, 13 were achieved in full, 5 were partially achieved and 2 were not yet achieved.

Included in the strategies achieved in full were: transport 5 days/week to medical appointments, transport to social events, assistance with information and referral, work with private operators, provide flexible services, monitor parking and pedestrian crossings, implement Health Plan, provide community transport, provide HACC and community support services, monitor condition of footpaths and provide new ones, organise regular events,

Partially achieved strategies included: lobbying for greater police resources, improved local and regional health services, review usage of council facilities, ensure sustainable development of urban and rural land, better housing design and options for older people to be include in the new LEP.

Strategies not achieved were: include safer built urban environment objectives in the new LEP, consult with community regarding the use of Kiama Community Centre

People with A Disability

There were 6 objectives for people with a disability in the 2004-2009 Social/Community Plan.

To meet these objectives, there were 11 strategies. Of these, 7 were achieved in full, 1 was partially achieved and 3 were not yet achieved.

Included in the strategies achieved in full were: provide community transport, lobby for greater access to public transport, provide support services, make referrals to Interchange Illawarra, lobby

for independent living facilities, implement Health Plan, monitor condition of roads, footpaths and crossings.

The strategies that was only partially achieved was the development of a Disability Action Plan

Strategies not yet achieved were: seek greater opportunities for the employment of people with a disability, seek support of regional organisations to provide local training and sheltered workshops, lobby for crisis care and rehabilitation for people with acquire brain injury.

Aboriginal and Torres Strait Islander People

There were 4 objectives for Aboriginal and Torres Strait Islander (ATSI) people in the 2004-2009 Social/Community Plan.

To meet these objectives, there were 12 strategies. Of these, 5 were achieved in full, 2 were partially achieved and 5 were not yet achieved.

Included in the strategies achieved in full were: promote and display appropriate resources, participate and support NAIDOC Week, install new flagpole and fly Aboriginal flag, consult with the Aboriginal community through NPWS of DA applications, incorporate Aboriginal arts in buildings and parks.

Strategies that were only partially achieved were: develop the ATSI component of Kiama Library, employ ATSI people in community arts projects.

Strategies not yet achieved were: increase ATSI component at new expanded Gerringong Library branch, implement Health Plan, lobby for improved local and regional services, assist Gerringong Housing Aboriginal Corporation with funding applications, include greater variety of housing design and options in new LEP.

People from Culturally and Linguistically Diverse Backgrounds

There were 4 objectives for people from Culturally and Linguistically Diverse (CALD) Backgrounds in the 2004-2009 Social/Community Plan.

To meet these objectives, there were 8 strategies. Of these, 7 were achieved in full, 1 was partially achieved and zero were not yet achieved.

Included in the strategies achieved in full were: Support the teaching of English as a second language, support Kiama community College in provide educational facilities, distribute information through the library, KCC and internet, liaise with Illawarra Migrant Resource Centre, provide wide range of activities in the Library, organise activities for CALD community, implement Health Plan.

The strategy that was only partially achieved was: lobby for improves local and regional health services.

2010 – 2012 PLAN

Children

The 2006 Census found that there were 2660 children (aged 0-11 years) living in the Kiama Municipality. Children make up 14.4% of the total population of Kiama. This is a 2% decline from the 2001 Australian Bureau of Statistics Census.

Issues specific to Children and Families in the Municipality of Kiama Council, through its Needs Assessment of Children has discovered that the following were found to be issues for children and families in the Kiama Municipality.

- Childcare and the inherent need to advocate for more centres, out of school hours care, to decrease waiting lists for care, in particular care for children under the age of 2 years;
- The provision of capital funding for appropriate childcare facilities and other services for children;
- Support services and resources for parents – the need to provide access to information on available services, the provision of support services and encouragement of interaction and social support network for parents;
- Safety in terms of the promotion of road safety awareness, community safety, beach safety, drowning, burns, violence, poisoning, sports and leisure.
- The importance of providing early childhood health services, women's health services and the promotion of a healthy lifestyle at a young age;
- Play areas and parks as a safe place and the provision of sun shelters, suitable equipment and facilities;
- The provision of recreational activities and facilities;
- The importance of education;
- The importance of childhood social interaction as a vital stage of development;
- Part-time employment for parents.

Kiama Council Children's Services

The position of the Children's Services Manager previously serving both the Shellharbour and Kiama Local Government Areas is no longer funded.

Strategies

- Provision of services, facilities and programs to improve the health of young children and parents
- Create awareness of road safety and reduce the number of road accidents affecting children
- Create a safe environment for children by ensuring playground safety standards are met
- Promote safe and developmentally appropriate child care facilities
- Create opportunities for parents and children to become better informed and have social interaction

- Improve the well being of families through opportunities through supporting services that facilitate employment opportunities
- Create awareness of child care needs and priorities
- Ensure information is available to parents for accessing services

Young People

In 2006, there were 3,290 young people (aged 12-24 years) in the Kiama Municipality. This makes up 17.8% of the total population.

Issues Specific to Young People in the Municipality of Kiama Council, through its Needs Assessment of Young People has discovered that the following were issues for young people in the Kiama Municipality.

- Recreation and lack of things to do in the area, in particular lack of provided entertainment events, facilities and festivals, and poor accessibility due to public transport;
- Drug and Alcohol usage due to boredom, peer pressure, and a lack of education;
- The importance of general youth services and youth facilities as a space provided only for young people, a lack of services in Jamberoo and Gerringong, and the need to provide more activities and facilities across all areas of the municipality;
- Low or no income and the cost of living. Young people aged 15-24 years made up over half of the population (54.4%) who earned less than \$40 per week at the 2001 Census.
- The lack of public transport, regular transport services and services to the remote areas across the municipality. Access to tertiary educational facilities in other LGAs and other services not provided in the Kiama LGA is difficult;
- The lack of opportunity and assistance for young job seekers in the municipality. Kiama is part of a region that has a high youth unemployment rate. In 2001 Kiama had a youth unemployment rate of 15.2%. In NSW it was 13.8%. Almost half of all unemployed persons (41.9%) in the Kiama LGA are between the ages of 15 and 24 years;
- The lack of provision of health services, in particular services addressing mental health/depression and women's health;
- Recognition of peer pressure and how it hinders personal development and confidence;
- Issues of crime and safety – drink driving, poor street lighting, drink spiking - and the lack of police presence in the municipality (Gerringong in particular);
- The importance of education and the problems surrounding the accessibility to tertiary educational facilities in other LGAs;
- The provision of affordable housing for young people without overdeveloping the area;
- The importance of educating young Aboriginal people about local Aboriginal culture and traditions.

Kiama Council's Youth Services

Kiama Youth Resource Centre, or "The Cottage", is based in Hindmarsh Park opposite the central business district of Kiama. Kiama Youth Centre exists for use by young people and provides the youth services available to young people in the Kiama Local Government Area.

The Youth Centre aims to provide a place for young people where:

- They have their own environment
- They have access to a variety of youth services under one roof, including activities, drop in, employment services (job folder, training in resume and job interviews, etc.)

- They have opportunities to develop in areas where they are not catered for in the existing funding guidelines of youth services
- They can develop their own cultural identity
- There is a focal point in the community for youth initiatives
- There is easy access to information and referral
- There is a safe and non threatening environment

Currently the services that Council and “The Cottage” provide include:

- A space for young people to relax, have fun and just be themselves. In the Cottage there is a pool table, air hockey table, access to a computer and the Internet, a kitchen, band practice room, and an art gallery;
- A drop-in centre with youth workers who are willing to talk about anything;
- Regular and one-off activities which have included breakdancing, DJ-ing, Aerosol art, know your car, African drumming, guitar lessons, clay making, cooking/life skills, skate demos and comps, concerts, mural design, photo frame making, etc.
- Assistance with preparing resumes and job interview techniques. The Cottage also provides a “Job Folder” which features available jobs that are updated daily;
- The Youth Advisory Committee, which acts as a means for youth consultation and a voice for young people;
- Access to multimedia space, video camera, computers, and the internet;
- Facilitates “Cottage Records”.

Strategies

- Support access to services and programs by young people from Gerringong, Jamberoo and North Kiama
- Involvement of young people in local programs that reflects their particular needs
- Opportunities for young people to show their talent and participate in supervised events
- Educate and assist young people to have a healthier lifestyle
- Improve accessibility of services for all young people
- Opportunities for more direct information on substance use / abuse
- Maximise the use of the youth centre with a wide range of programs and activities
- Improve access to information by young people to know their rights and responsibilities
- Improve opportunities for more young people to continue living in the Municipality through improved access to employment, educational and recreational services
- Promotion of positive image of young people in the wider community
- Ability for young people and the community to have access to more Police presence
- Recognition of the high impact on families and the community that road accidents have

Older People

In 2006 there were 4472 older persons (aged 60 plus) living in the Kiama LGA. This makes up 24% of the total population.

There are some likely implications of the ageing population:

- The overload on existing support services and whether these support services can accommodate such a growing need;
- There will be higher levels of people suffering from a disability or chronic illness due to the increasing life expectancy age. This will lead to higher levels of people needing support services;
- Pressure on Government resources, aged pensions and other aged services;
- Like other coastal areas the Kiama LGA attracts retirees. As such, the pressures will be greater in Kiama. The ageing population in Kiama has implications in terms of housing supply, affordability and employment.

It is therefore a challenge for Council's Community Services Department to plan and put in place appropriate policy that caters for this changing dynamic. The shifting needs of older people determine the services that Council provides. Older people in the Kiama Municipality raised the following issues:

- The importance of transport and mobility, and how it affects accessibility to a wide range of services and social events. Also the need for a wider range of transport services to cater for differing needs, and long-term users;
- Home services, and other support services. There is likely to be a longer waiting list and the need for more service provision to cater for a growing population of older people;
- The safety of older people in relation to traffic, crime and accessibility to public spaces;
- The lack of public health services, and the cost and the need for more specialists in Kiama;
- The importance of facilities and the need for more footpaths and maintenance, a multipurpose centre for Gerringong, a town hall for Kiama, bus stops and public toilets and a facility to house all aged services under one roof;
- The fear of overdevelopment and the loss of the small town character;
- Isolation and loneliness due to physical conditions and the inherent effects on the well being of older people;
- The importance of the natural environment of Kiama;
- The lack of access to information in regards to the services available to older people;
- Little affordable housing, especially for low income retirees.

Kiama Council's Aged Services

Kiama Council considers services for older people in the Kiama area to be a high priority. Kiama Council's aged services operate under the title of Kiama Council Community Support (KCCS), and is the principal provider of Kiama Council's Community Services with funding grants provided by both Commonwealth and State Governments. The infrastructure developed and resourced by Kiama Council in response to meeting the needs of frail aged, younger people with a disability and their carers in the community, comprises the Home and Community Care (HACC) funded programs, In

Home Respite (Kiama LGA), Community Transport (Kiama LGA), Neighbour Aid Project (Kiama LGA), Community Nursing (Kiama LGA), Community Options (Kiama/Shellharbour LGAs), and the Domestic Assistance Project (Kiama/Shellharbour/Wollongong/Shoalhaven LGAs). Additionally, Council manages an 80 place Community Aged Care Package (CACP) program that provides service in the Wollongong, Shellharbour and Kiama LGAs.

The development and implementation of this program provides for a single regional point of entry for consumers, potential consumers, and carers, and advocates to a wide range of in-home and community support services.

The following services are provided on an ongoing basis:

- Illawarra In Home Support – 80 Community Aged Care Packages
- Community Options – Case management and services for 50 clients
- Respite Services – Services provided by volunteers for 40 clients
- Community Nursing – Medical intervention for 20 clients
- Community Transport – 10,000 passenger trips annually, provided by volunteers
- Domestic Assistance – Services provided to 45 clients
- Neighbour Aid – Services provided to 30 clients

KCCS utilises a pool of approximately 80 volunteers. These volunteers are recruited, trained and supported by KCCS staff.

KCCS also operates a Brokerage Nursing service, which provides approximately 900 hours of service per month to a range of approximately 10 contractors. These services and the services provided by Illawarra In Home Support are conducted by a pool of 50 support workers employed under KCCS.

KCCS have recently received re-current funding for a Centre Based Day Care which has just commenced operating twice a week in the Municipality. Funding was secured through DADHC, and the service provides various activities and games for older people.

KCCS resource and support a Community Support Advisory Committee which generates ongoing consultation with relevant stakeholders. In addition to this KCCS participates in forums, initiatives and opportunities with other government and non-government agencies and departments on a regular basis to improve cooperative decision making, minimise duplication and improve access to community resource.

A community consultation was also held in Gerringong in mid 2003, with approximately 200 older people attending. Council held face to face interviews with the aims of gaining an insight into the issues affecting older people in the community and any areas of unmet need in terms of service provision for the purpose of this Plan.

Kiama Council Community Services Department produce an annual Directory for Seniors and People with a Disability. The Community Services Department also include a chapter on Aged Services in its Community Services Directory. The directories provide information and contacts for services for older people in and out of the Municipality.

Council also facilitates a Seniors Week Committee and compiles a Seniors Week program which is distributed and implemented annually.

In addition to the Community Services Department's programs for older people, Kiama Council also fully runs and operates the Blue Haven Retirement Village. The Village consists of a 52 bed nursing home, a 30 bed hostel and 115 independent living units.

Strategies

- Make available community buses and pool cars for the HACC target group
- Create greater opportunities for the HACC target group to access a healthier social life
- Improve the life of older people and help them to stay at home as long as possible living independently
- Improved roads and streets by identification of parking spaces and pedestrian crossings
- Create people friendly communities and housing options that consider the well being of older people
- Greater opportunities for more access to health services and facilities
- Improve the efficient usage of facilities and diminish demand for more buildings
- Reduced residents isolation and loneliness by accessing services that allow interaction with other people
- Ensure that older residents have access and are aware of services available to them
- Protection of the environment while ensuring that development take place in an orderly and sustainable approach
- Improve opportunities for affordable and suitable accommodation for older people

People from Culturally and Linguistically Diverse Backgrounds (CALD)

Analysis of the country of birth of the population in the Kiama Municipality in the 2006 Australian Bureau of Statistics Census shows that there were a relatively small proportion of people born overseas as well as a small proportion of people from a non-English speaking background.

Overall, 12.7% of the population was born overseas, and 4.1% were from a non-English speaking background. The dominant non-English speaking country of birth was Germany, where 0.5% of the population, or 85 people, were born.

Council, through its Needs Assessment of people with CALD Backgrounds has discovered that the following were found to be issues for people with CALD backgrounds specifically in the Kiama Municipality.

- Unemployment and limited training and job opportunities for people with overseas qualifications. The language barrier effects unemployment rates;
- Limited information for newly arrived immigrants, and poor access to language and other support services in the Kiama area;
- Lack of educational facilities in Kiama and little available information about gaining recognition for overseas qualifications;
- Lack of social, cultural, artistic, linguistic, musical and multi-cultural activities in the area;
- The need to provide a better public transport system to aid in the social and geographical isolation faced by people with CALD backgrounds;
- Poor access to the provision of social services;
- Health issues and knowledge and access to available health services, in particular services for depression, drug and alcohol abuse, domestic violence and child abuse;
- Public safety and victimisation of crime;
- Discrimination.

Strategies

- Opportunities to acquire skills that will assist in greater participation within Australia's society
- Greater availability of information to provide better tools for knowledge
- Ability of people from CALD to obtain specific information on services designed for immigrants and refugees
- Recognition of cultural diversity and its value in maintaining such within Australian society
- Create an awareness of the Australian multicultural society and the contribution of migrants to communities through arts

- Create a healthier and safe environment for people from CALD background
- Greater opportunities for better access to health services and facilities

Aboriginal and Torres Strait Islander People

According to the 2006 Census, the number and proportion of Aboriginal and Torres Strait Islander (ATSI) People in the Kiama LGA is relatively low. There were a total of 223 ATSI people living in the Kiama area, representing 1.2% of the population. Although the population of ATSI people is relatively small, the number of ATSI people and the proportion has dramatically increased since previous years. The ATSI population grew 119.8% in the 10 years between the 1991 and 2001 Census

This significant increase in the ATSI population could anecdotally reflect the greater willingness of ATSI people to identify themselves and report their Aboriginality. This is a result of a long trend since the 1967 Constitutional Referendum, where there has been a growing shift in ideology and cultural perceptions towards Aboriginal people and what it means to be Aboriginal.

Council, through its Needs Assessment of ATSI People has discovered that the following were found to be issues for Aboriginal people in the Kiama Municipality

- The importance of recognising and understanding Aboriginal people and their culture across the community;
- Understanding the importance of the Aboriginal flag to Aboriginal people;
- Poor access to Aboriginal health services and lack of information and promotion about health services to the Aboriginal Community;
- The importance of the land, the environment and Aboriginal Heritage to Aboriginal people. There is a need to recognise heritage sites and traditional lands for the education of younger Aboriginal people and the rest of the community;
- Distinct lack of Aboriginal support services in the LGA in the areas of health, family, and housing. There is also a lack of cultural education to the wider community;
- The need for more Aboriginal art in the LGA and the lack of understanding of art as a method of communication and significant meaning for ATSI people;
- The promotion of reconciliation and recognition of native land title rights;
- The need for more public housing for ATSI people in the Kiama LGA. High land values decrease the possibility of low income earners and younger people to live in the area;
- The importance of community support, in the areas of consultation and development, and involvement in community management;
- The lack of transport services and its relation to accessibility to Aboriginal services out of the LGA;
- The need to encourage Aboriginal employment through the community arts sector and to support the Aboriginal Housing Corporation in the area of training and education.
- The need to promote local Aboriginal culture to the young ATSI people in the municipality to diminish the fear of losing the traditional Aboriginal culture of the Kiama area.

Strategies

- Improved culture awareness and the importance of various aspects of ATSI culture
- Recognise the importance of Aboriginal sites and ensure their protection
- Greater opportunities for better access to health services and facilities
- Provide employment opportunities for ATSI people and foster cultural development

People with a Disability

In 1998 there were an estimated 3,382 persons with a disability living in the Kiama LGA. This makes up a large proportion of the community (19.5%), and is higher than the percentage for NSW (18.2%). The occurrence of a disability is strongly related to age, and the severity of the disabling condition generally increases in older people. Therefore, it is important to consider the ageing population and how this will impact on disability services.

In order for people with a disability to fully participate in the community, it is vital to ensure there are no barriers, as these are often the factors which 'disable' people. Public infrastructure must be equitable provided and accessible. It is therefore Council's obligation to be aware of the inherent level of disadvantage that people with a disability possess.

Council, through its Needs Assessment of People with a Disability has discovered that the following were issues for people with a disability and their carers in the Kiama Municipality:

- Immobility and limited access to public transport;
- Lack of employment opportunities, training and sheltered workshops for people with a disability in the Kiama LGA;
- The importance of recreational and social activities as a method of reducing isolation for people with a disability and providing respite for carers;
- The provision of more respite care, ongoing care and in-home services;
- Lack of independent living facilities and services in the Kiama LGA;
- The recognition of carer issues such as isolation, self-esteem, and stress, and the lack of carer support;
- Accessibility of available services such as employment, centre based respite, workshops, support, and health services, which are located in other LGAs;
- The importance of promoting available services and information;
- The lack of Crisis Care and rehabilitation for traumatised people with Acquired Brain Injury;
- The lack of crossings for the vision and hearing impaired and footpaths for wheelchair users.

Services Available for People with a Disability

Council's role, along with State and Commonwealth Governments is to promote independence by providing support service to people with a disability and their carers, and also to ensure that people with a disability have equitable access to all facilities and infrastructure in the community.

Council's most important role is to administer and provide a range of ongoing support services to people with a disability and their carers. The Department of Disability, Ageing and Home Care (DADHC) is responsible for the policy, planning, resource allocation and performance measurement for the delivery of supports and services for people with a disability, older people and their carers in NSW. DADHC currently provides funding to the Peer Support Program. The program involves the use of trained volunteers in providing social and recreational activities to people with a disability in the Kiama LGA. The service previously only catered for young people with a disability aged 12-25 years. However, the coordination of the program recently became the responsibility of Interchange Illawarra, which felt that there was a need to provide activities for all people aged over 12 years with a disability.

DADHC also administers the Home and Community Care (HACC) Program, a joint Commonwealth/State program that provides support for frail aged people, younger people with disabilities and their carers to allow them to remain at home and to prevent inappropriate or premature admission to residential care. The services that Council currently provides for people with a disability are Community Transport, Community Options, Respite services, Neighbour Aid, Domestic Assistance and Community Nursing. These services are also available to older people.

Council is committed to promoting and administering accessibility to their buildings and facilities in the Municipality. All areas that involve access within the LGA are referred to Council's Access Committee. The Committee involves Council staff, community representatives, Councillors and representatives of other organisations and identifies issues in regards to the accessibility of Council's facilities.

Council has also convened a Men's Group for men with an intellectual disability. The group was formed as it was felt that the available support groups were only being utilised by older people and women. The group operates from the Kiama Community Centre.

Strategies

- Improve access to services and facilities for people with a disability
- Create opportunities for people with a disability to reduce isolation
- Improve opportunities for people with a disability to live independently and have direct access to support services
- Improve opportunities for people with a disability to obtain local training without the difficulties to travelling outside the Municipality
- Aim for a healthier environment for people with a disability
- Provide a safe and accessible wide range of pedestrian facilities and roads

Women

In 2006, the total number of women contributed to 51.3% of the total population of Kiama. This figure compares with the Illawarra and NSW, where there are fractionally more females than males.

Although women make up half of the population, women have historically faced challenges surrounding their societal subordination. Some universal issues and concerns for women today include:

- Access to education and the ability to find employment as compared to males;
- Women's health (cancer and mental health in particular) and access to health care and services;
- The involvement in leadership positions, particularly in the workplace;
- Inequities in accessing information and consumer rights - unfair treatment across a range of industries including financial, motor vehicle and building industries;
- Violence and safety in the community and the home and available support services;
- The dominance of women as single parents and the financial and social implications;
- The issues surrounding employment - discrimination, unequal pay, inflexible working conditions and limited access to training and promotion;
- Balancing roles as the primary carer and participating in the workforce

(Source: The NSW Department for Women, 2004)

Issues specific to Women in the Municipality of Kiama

Council, through its Needs Assessment of Women has found that women in Kiama faced the following issues:

- The importance of health and access to physical, mental and women's health services;
- The lack of provision of and access to family support services, child care services and women's services;
- The lack of employment opportunities in Kiama, especially for young women;
- Inadequate transport services and its effect on safety and access to employment and education;
- Safety and crime in public spaces and the inherent effects on the health and well-being of women;
- The lack of tertiary training and education facilities, which can then lead to low participation in employment;
- The importance of heritage conservation and the fear of overdevelopment, especially for older women;
- General isolation and the effects it has on access to services that are not provided in the Kiama Municipality;
- The issues of drugs and alcohol and mental health/depression in young women.

Strategies

- Create a healthier environment for women
- Improve the life of women in the community and their economic independence
- Better skills to assist in family life and the community
- Provide a safer environment for women in the Municipality
- Encourage greater community support for women
- Create awareness of the different needs of women in the community
- Improved education that can lead to a healthier lifestyle
- Create an environment where people and communities are aware of mental health as much as physical health

REFERENCE LIST

List of Acronyms

AC Arts	Australia Council for the Arts
ABS	Australian Bureau of Statistics
AI	Amnesty International
ATSI	Aboriginal and Torres Strait Islander
ATSIC	Aboriginal and Torres Strait Islander Commission
CACPs	Community Aged Care Packages
CALD	Culturally and Linguistically Diverse (backgrounds)
DADHC	Commonwealth Department of Ageing, Disability, and Home Care
DoCS	NSW Department of Community Services
FACS	Commonwealth Department of Family and Community Services
HACC	Home and Community Care
IDGP	Illawarra Division of General Practice
IMRC	Illawarra Migrant Resource Centre
IRIS	Illawarra Regional Information Service
KCC	Kiama Community College
KMC	Kiama Municipal Council
KCCS	Kiama Council Community Support
LGA	Local Government Area
MFTA	NSW Ministry for the Arts
MHP	Municipal Health Plan
NPWS	National Parks and Wild Life Service
OOSH	Outside of School Hours (care)
RTA	Road and Traffic Authority
SoE	State of the Environment (report)

References

1. Kiama ID Profile
<http://profile.id.com.au/Default.aspx?id=296&pg=138&gid=10&type=enum>
2. Australian Bureau of Statistics, 2006 Census of Population and Housing.
3. Aboriginal and Torres Strait Islander Commission (ATSIC), 2004, *Issues*. URL: <http://www.atsic.gov.au/issues/Default.asp>
4. ABS, (1996, 1998, 2000), *Australian Social Trends: Cumulative Topic List*. URL: <http://www.abs.gov.au/Ausstats/abs%40.nsf/46d1bc47ac9d0c7bca256c470025ff87/845457f5083c5d88ca2569ad00041f24!OpenDocument>
5. Elberich, A. for the Illawarra Filipino Women's Group, 2002, *Profile of the Filipino Community (Wollongong, Shellharbour and Kiama)*.
6. Gerringong Community Services Group, 2003, *Submission to Kiama Municipal Council for the 2004-2009 Social/Community Plan*.
7. Illawarra Regional Information Service, 2003, *Illawarra: Mapping a Social Atlas* (Powerpoint Presentation).
8. Illawarra Regional Information Service, July 2002, *Kiama Strategic Futures: Residents Survey (Draft Report)*.
9. Illawarra Regional Information Service, December 2003, *Profile Illawarra: Regional Economic Summary*.
10. Kiama Community College, October 2003, *Equity Research Project*.
11. Kiama Municipal Council, 2001, *Community Facilities Study (Draft)*.
12. Kiama Municipal Council, June 2002, *Cultural Needs Assessment Study*.
13. Kiama Municipal Council, March 2001, *Community Services: An Overview and Directions for the New Millennium*.
14. Kiama Municipal Council, 2001, *Municipal Health Plan 2001-2004*.
15. Kiama Municipal Council, 2003, *Municipal Health Plan Consultation Results*.
16. Kiama Municipal Council, 2004, *Needs Assessment for Aboriginal and Torres Strait Islander (ATSI) People*.
17. Kiama Municipal Council, 2004, *Needs Assessment for Children*.
18. Kiama Municipal Council, 2004, *Needs Assessment for Older People*.
19. Kiama Municipal Council, 2004, *Needs Assessment for People with a Disability*.

20. Kiama Municipal Council, 2004, *Needs Assessment for People with Cultural and Linguistically Diverse (CALD) Backgrounds*.
21. Kiama Municipal Council, 2004, *Needs Assessment for Women*.
22. Kiama Municipal Council, 2004, *Needs Assessment for Young People*.
23. Kiama Municipal Council, *Social/Community Plan 1999-2004*.
24. Kiama Municipal Council, 2003, *State of the Environment Report*.
25. Kiama Municipal Council, 2003, *Access and Equity: Summary of Achievements from the Social Plan for 2002/2003*.
26. Kiama Council Community Support, November 2002, *Combined Planning Day*.
27. Kiama Council Community Support (Sara Shaw & Eileen Brown), 2003, *Disability Service Needs Study*.
28. Kiama Council Community Support. *Disability Survey Report*.
29. Kiama Council Community Support, 2003, *Kiama Council Community Nursing Service Evaluations/Surveys*.
30. Kiama Council Community Support, *Kiama/Shellharbour Community Options Survey Report*.
31. Kiama Council Community Support, August 2002, *Peer Support Survey Report*.
32. Kiama Council Community Support, July 2003, *Respite and Neighbour Aid Survey Report*.
33. Kiama Council Community Transport, September/October 2002, *Client Questionnaire Results*.
34. Kiama Council Community Transport, March/April 2003 Update, *Client Questionnaire Results*.
35. Kiama Council Community Transport, 2003, *Monday Shopping/Library Bus Client Questionnaire Results*.
36. Kiama Council Community Transport, February/March 2003, *Volunteer Questionnaire Results*.
37. Ecological Sustainable Design (ESD) for Kiama Municipal Council, July 2002, *Kiama Town Centre Charrette*.
38. Kemp, D. for Kiama Municipal Council, March 2003, *Kiama: Economic and Employment Strategy*.
39. Mission Australia, 2003, *National Youth Survey Results*. URL: http://mission.com.au/cm/Resources/SocialPolicyDocs/SPR02_Youth%20Survey.pdf
40. NSW Department for Women, 2004, *Important Issues for Women*. URL: <http://www.women.nsw.gov.au/>

41. NSW Department of Ageing, Disability and Home Care, 2002, *Client Records Received From CSDA-funded Service Providers for Clients Residing in Postcodes 2533 and 2534*.
42. NSW Department of Local Government, *Local Government (General) Amendment (Community and Social Plans) Regulation 1998*.
43. NSW Department of Local Government, December 2002, *Social Planning and Reporting Guidelines*.
44. NSW Department of Local Government, December 2002, *Social Planning and Reporting Manual*.
45. World Health Organisation (WHO), 2001, International Classification of Impairments, Disabilities and Handicaps in "Prevalence of impairments, disabilities, handicaps and quality of life in the general population: a review of recent literature", *Bulletin of the World Health Organisation*, 79 (11), 2001. URL: www.who.int
46. Kiama Library User Survey 2007
47. Kiama Council Business Retention and Expansion Survey 2004
48. Kiama Council LEP Community Surveys 2003 *Gerringong/Gerroa, Minnamurra, Kiama Downs, Bombo, Kiama and Kiama Heights, Jamberoo*
49. Kiama Council Youth Survey 2009
50. Kiama Council Advocate Interviews 2009
51. Kiama Council Community Survey 2009