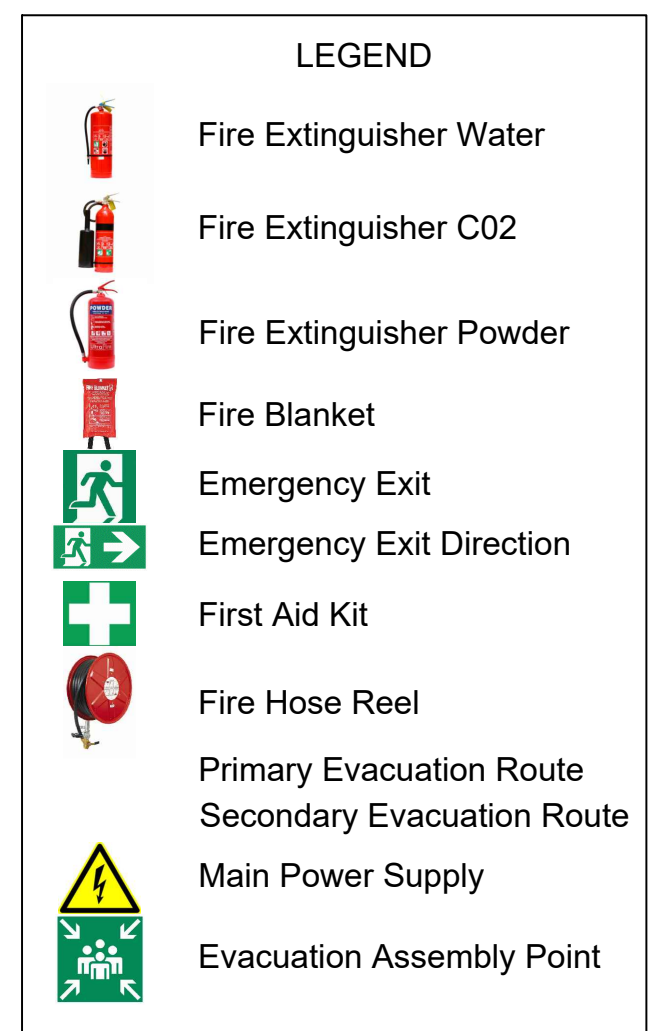
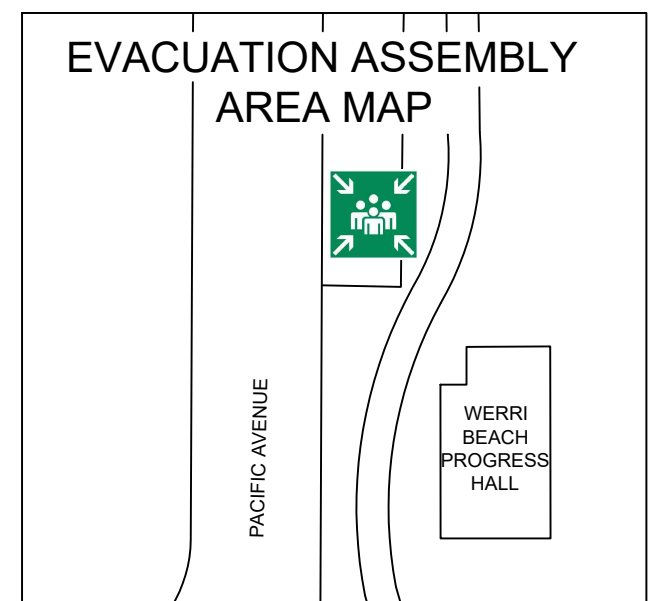
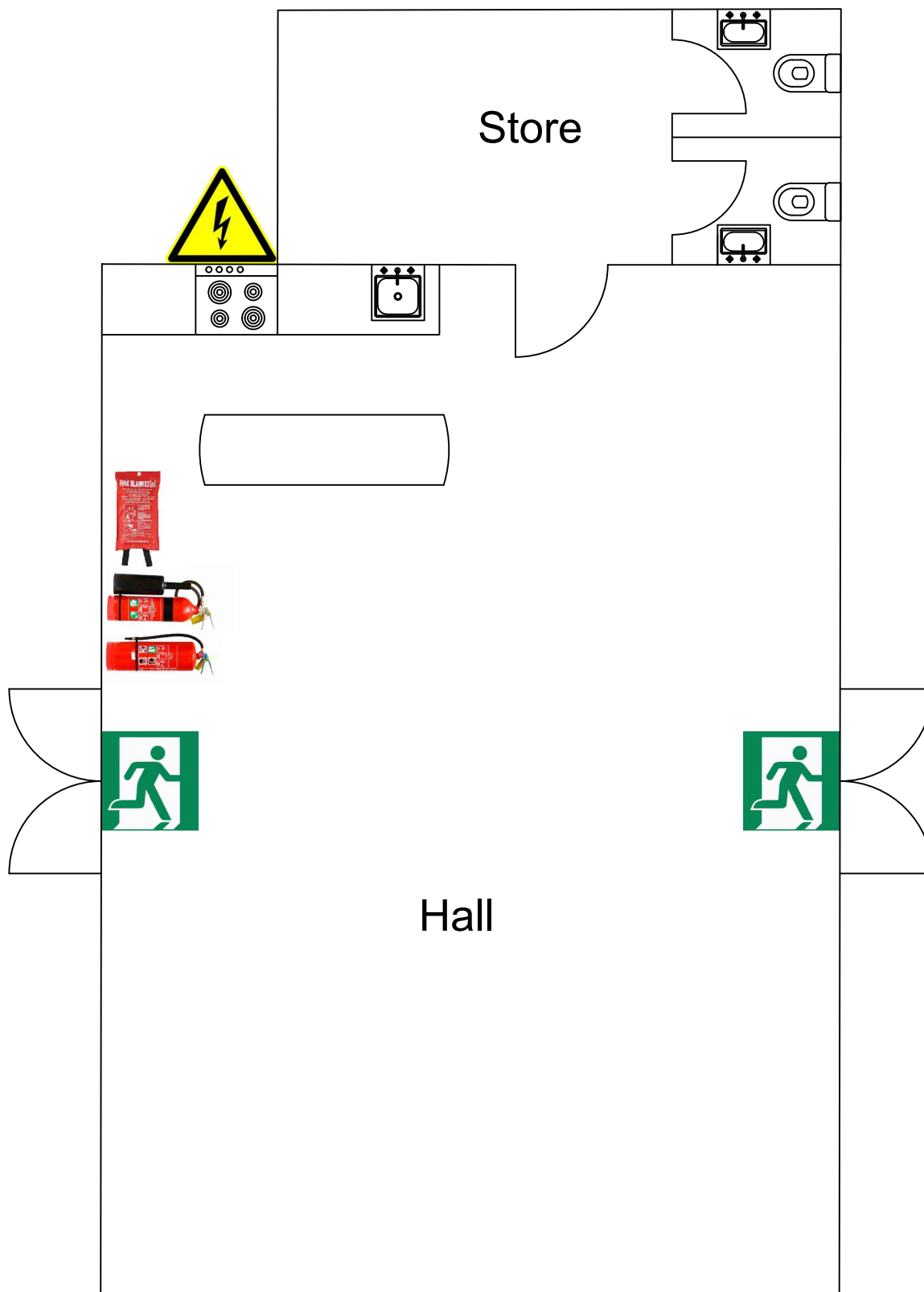


# EVACUATION PLAN

## WERRI BEACH PROGRESS HALL



### EVACUATION PROCEDURE

- Remain calm - Do not shout.
- Follow the emergency wardens instructions if they are present.
- Leave the building immediately in an orderly manner following the designated path.
- Dial 000 (triple zero) and inform the operator of the emergency.
- In case of fire if there is no immediate danger close all windows and doors as you exit.
- Assist less mobile people to evacuate.
- Proceed to designated assembly area.
- Remain in the assembly area until instructed otherwise by emergency wardens.
- Provide any assistance required.