

Hindmarsh Park Upgrade Community Consultation Summary

Who We Reached



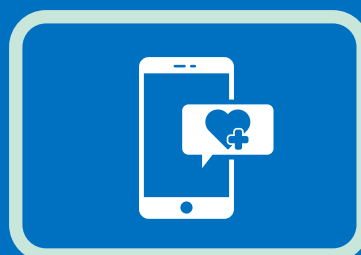
150 community information newsletters were posted in letterboxes and emailed to community stakeholder groups



There were 303 online survey responses on the Your Say page during the community consultation period



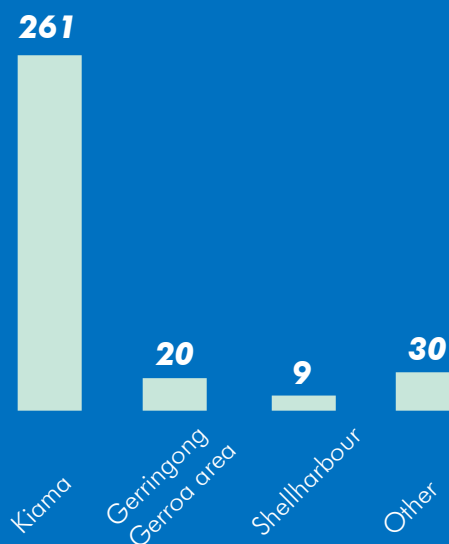
Approx. 32 people shared their feedback in person at two community consultation drop in sessions in Hindmarsh Park. 15 young people from SENTRAL also shared their feedback



Social media posts were used to promote the Your Say page and online survey to people in the local area

Demographics

- ▶ Most community members who participated in the online survey and in-person drop in sessions reside in Kiama
- ▶ Of the people who participated in the online survey and in-person drop in sessions, 71% were female; 28% were male
- ▶ We reached community members from a diverse range of age groups, ranging from under 18 to over 65 years, but the most represented age brackets were 36-50 years (40%), 51-65 years (22%) and 18-35 years (21%)



Where were respondents from?

What We Heard

- ▶ Of the 350 survey responses, approximately 236 respondents provided written comments to open ended questions about what they would like to see improved in Hindmarsh Park.
- ▶ We have summarised these comments into three main themes for Hindmarsh Park.

1. Increase amenity

65%

**of respondents
expressed a desire to
increase Park amenity**

"improved facilities, keep the natural amphitheatre grassed area but a few more shaded tables to eat at."

"more picnic tables and seats would be nice so you don't have to camp at the few available"

"some extra seating options around the hill and some thicker tree coverage on the hill for shade... keep the open green on the flat but a more modern look."

2. Improve playground

55%

**of respondents
expressed a desire to
improve the playground**

"a place where children can play and adults can sit closely in the shade"

"natural play elements that reflect local stories and culture"

"nature play & enhanced natural features that encourage risk taking for all age groups"

3. Don't overdevelop the Park

43%

**of respondents
expressed a desire to not
overdevelop the Park**

"it's important not to clutter the park and to provide open vistas to Black Beach"

"keep as much open space as possible and don't overwhelm it with structures"

"it's a lovely place to be... so sometimes I find myself there with no intention but to relax"

Key Findings

- From the community feedback received, five uses for the park stood out:



Walking
65%



Visiting Playground
58%



Sitting & Relaxation
56%



Picnicking & Social Gatherings
42%



Live Music Events
22%

- The ten most popular ideas for upgrading Hindmarsh Park are listed below:

1. Lighting & night time activation
50%



2. Slides, climbing & similar play equipment
49%



3. Seating & outdoor dining opportunities
49%



4. Swings & shade
47%



5. Water splash play
44%



6. Nature play
32%



7. Activities for teenagers
30%



8. Shaded live events spaces
27%



9. Improved foreshore connection & access
26%



10. Loop paths
25%



Here's a snapshot of some ideas about Hindmarsh Park

Are there other reasons you visit the park?



"Excellent location in centre of town. Go there with visitors to enjoy a coffee or ice cream and let kids/dog play"



"I love walking through the park rather than walking along Terralong St, to get to the Cottages or Joyce Wheatley Centre. I also love sitting in the park under the trees like listening to the Jazz Festival"



"Hindmarsh Park is a lovely relaxing calm and uplifting place for locals and visitors to enjoy in its beautiful existing state with wonderful trees and shrubbery. It is very important for us all to have these beautiful natural parks to visit and calm and enjoy serenity and activity in."

What other improvements for the Park, activities or facilities would you like to see?



"Family friendly outdoor night dining and entertainment, integration between the park and restaurants."



"Please consider how highly people value open green space near the beach - it is magical and is what people love about Kiama."



"Ensure the park is not overdeveloped. The park is a great place at the moment and only needs modernising by a bit of planting and newer facilities. Better access to Black Beach and transition from Park to Beach would improve the area."

Is there anything else you would like us to consider as part of the project?



"More safe live events. Improve traffic. Do something that adds value to area maybe attract young families."



"Improved play area, options for skate and scooter paths, opportunities for art installation, better access to toilets for small children, disabled and frail elderly. Easy access for elderly with walking aids, opportunity for seating."



"The natural amphitheatre sitting on the hill in front of the Orry Kelly stage has really good outdoor acoustics especially during the jazz festival...it would be a great pity to lose that. The relocated stage for the last few festivals is pokey and nowhere the sound quality using the natural lie of the land."