



Accessibility in the Kiama Local Government Area - Jamberoo

Your guide to accessibility in your community

Your council, your community





How to use this guide

We made this guide to help you work out places in the Kiama Local Government Area that are **accessible**.

When something is accessible, it means you can enter a place or building. Or, you can use a service or get information.

We have worked out how accessible places are and put them in different groups.

These groups are:



- easy – accessible



- medium – you might need help from someone else



- hard – you will need help from someone else



- not accessible.

You might find some places easier or harder to get to than what this guide says. Not all places will be fully accessible. This guide will help you decide if a place is accessible to you.

Text that is [blue and underlined](#) is linked to more information.

Disclaimer








The term 'Accessible' is used to indicate accessible features of the Kiama Local Government Area (LGA). It is not intended to describe the facilities and features as fully compliant with the requirements of the Disability (Access to Premises) Standard 2010, the Building Code of Australia and/or related Access and Mobility Australian Standards. The information provided in this document is to help you assess your own capacity to access or use the various features.

Contents










Kiama Local Government Area



-  [Wheelchairs for the beach](#)
-  [Defibrillators](#)
-  [Holiday parks](#)
-  [Cemeteries](#)
-  [Paths where you can cycle](#)

Jamberoo



-  [General services](#)
-  [Adult change tables](#)
-  [Sports and recreation](#)
-  [Pubs and clubs](#)
-  [Public toilets](#)
-  [Popular places to visit](#)
-  [More information about accessibility in Jamberoo](#)



Kiamia Local Government Area



Wheelchairs for the beach



- There are 2 places where you can get a wheelchair to use on the beach in Kiama. There is:
 - 1 wheelchair at Seven Mile Beach Holiday Park
 - 1 wheelchair at Surf Beach Life Saving Club.
- If you need a wheelchair to get onto Seven Mile Beach, you can ask staff at the holiday park office.
- If you need a wheelchair to get onto Surf Beach, you can ask:
 - a lifesaver
 - someone at the kiosk.





Defibrillators

A defibrillator is a machine that helps people who are having problems with their heart.

It uses electricity to:

- fix a person's heartbeat if it is too slow or too fast
- start a person's heart again if it has stopped.

On the right is a list of places where you can find a defibrillator if you need one.



Summer Site Location	Winter Site Location
Kendall's Beach Life Guards	Kendall's Holiday Park Office
Jones Beach Life Guards	Life Guards Jet Ski
East Beach Life Guards	Kiama Harbour Cabins Office
Bombo Beach Life Guards	Surf Beach Holiday Park Office
Seven Mile Beach Life Guards	Seven Mile Holiday Park Office
Life Guard Vehicle	Life Guards Vehicle
Surf Beach Life Guard	Surf Beach Life Guard Office
Werri Beach Life Guards	Werri Beach Holiday Park Office
Old Council Chambers Building	Old Council Chambers Building
Kiama Council Administration Building	Kiama Council Administration Building
Kiama Community Centre	Kiama Community Centre
Jamberoo Pool	Kiama Leisure Centre
Kiama Showground Pavilion	Kiama Showground Pavilion
Kiama Library	Kiama Library
Kiama Council Depot Stores	Kiama Council Depot Stores
Minnamurra Waste & Recycling Depot	Minnamurra Waste & Recycling Depot
Kiama Leisure Centre	Kiama Leisure Centre



Holiday parks



We have put together some information about holidays parks in Kiama. This includes photos and information about their accessibility.

For more information, please visit www.kiamacoast.com.au

Kiama Harbour Cabins

Cabin 9 is in the medium accessible group. It has:



1 accessible car parking space outside the cabin



A ramp to get into the cabin



Outside barbecue area



Lounge room

Kiama Harbour Cabins



The kitchen is not accessible



Dining area



Bedroom



The shower has a:

- seat
- grab-rail



The bathroom sink has
a twist tap



There is a grab-rail:

- next to the toilet
- behind the toilet



Bunkbeds



Ramps at the doorways

Kendalls on the Beach Holiday Park



There are 2 cabins in the medium accessible group. The photos below are of Cabin 7.



There is parking for Cabin 7



There is a ramp to the cabin



Outside barbecue area



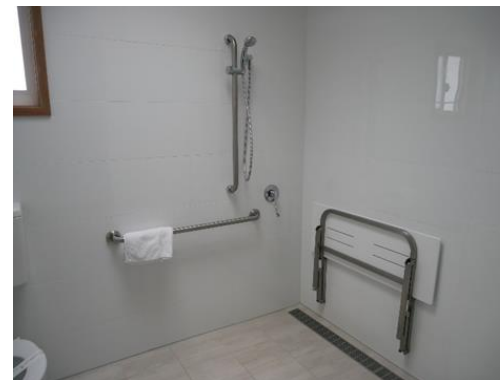
Lounge and dining area



The kitchen is not accessible



There is a grab-rail next to toilet



The shower has a:

- seat
- grab-rail



The bathroom sink has a push tap

Surf Beach Holiday Park



Surf beach has one easy accessible cabin, although not accessibility approved many other cabins have accessibility features.



Accessible ramp to cabin



Accessible kitchen sink



Bench seat in shower
Grab-rails in both shower and toilet areas
Removable shower head



Dining and kitchen area



Outdoor balcony area

Lions Cottage



Lions Cottage is on Shoalhaven Street in Kiama. It is managed by the Lions Clubs of Kiama, Gerringong and Minnamurra.

You can find out more by emailing hello@lionscottage.com.au



A ramp from the car park to the cottage



Bedroom



There is a grab-rail:

- next to the toilet
- behind the toilet



The shower has a grab-rail

There are lots of other accommodation providers in Kiama that have accessible options.

You can contact the Kiama Visitor Information Centre for more information – **1300 654 262**.



Cemeteries



We have put together some information about cemeteries in the Kiama area. This includes photos and information about their accessibility.

Bombo Cemetery

[You can get a map of the Bombo Cemetery here.](#)



There is no accessible parking



The road is also used as a path



Some of the road and all of the path to the accessible toilet has a gravel surface



There is a grab-rail:

- next to toilet
- behind toilet



There is a button under the sink that you have to push to use the water

Jamberoo Cemetery



There is no parking at Jamberoo cemetery



The accessible path doesn't go all the way around the cemetery



This is a photo of Jamberoo Cemetery from the sky

Gerringong Cemetery



[You can get a map of Gerringong Cemetery here.](#)



There is 1 accessible car parking space



There are some accessible paths outside the cemetery



Inside the cemetery it is steep and there is no accessible path



There is an accessible path to the flagpole



Paths where you can cycle





Jamberoo





About this section



We have put together some information about accessibility in Jamberoo. This includes photos and information about:

- accessible parking
- general services, like the Post Office
- sport and recreation places, like Kevin Walsh Oval
- pubs and clubs
- public toilets
- popular places to visit in Jamberoo, like Jamberoo Pool.



General services



Jamberoo School of Arts Hall

[Get a map of Jamberoo School of Arts Hall here.](#)



1 accessible car parking space



Accessible path



There is no accessible toilet, but there is a grab-rail next to the toilet



The bathroom sink has a push tap

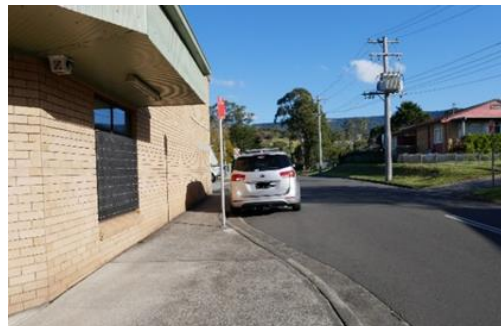


A ramp with a handrail on 1 side



Australia Post Office

[Get a map of Australia Post Office here.](#)



There is:

- no accessible car parking space
- a barrier kerb at the parking



Entry

Jamberoo Newsagency

[Get a map of Jamberoo Newsagency here.](#)



There are no accessible car parking spaces

The path is a little bit steep – you might need help using it



The path to the newsagency is a little bit steep – you might need help using it



Entry

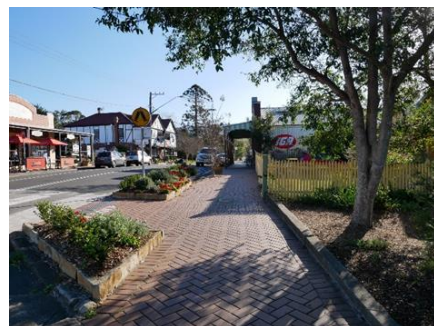


Jamberoo IGA

[Get a map of Jamberoo IGA here.](#)



1 accessible car parking space



The path from the parking to the IGA is a little bit steep – you might need help using it



Entry

Jamberoo Youth Hall

[Get a map of Jamberoo Youth Hall here.](#)



1 accessible car parking space



The path to the hall is not flat



Entry



Adult Change Table – Kevin Walsh Oval



There is an adult change table at Kevin Walsh Oval with an electric hoist.

You need a **MLAK Key** to get in.

A MLAK key lets people with disability get into places, like accessible toilets that might be locked.

You can get a MLAK Key from the:

- [Jamberoo IGA](#)
- [Jamberoo Pub](#)



Sports and recreation



Kevin Walsh Oval

[Find out more about the accessible toilets at Kevin Walsh Oval here.](#)

[Get a map of Kevin Walsh Oval here.](#)



There are no accessible car parking spaces



Oval



The Club House



Pubs and clubs



Jamberoo Pub

[Get a map of Jamberoo Pub here.](#)



There are no accessible car parking spaces

The path is a little bit steep – you might need help using it



The hallway



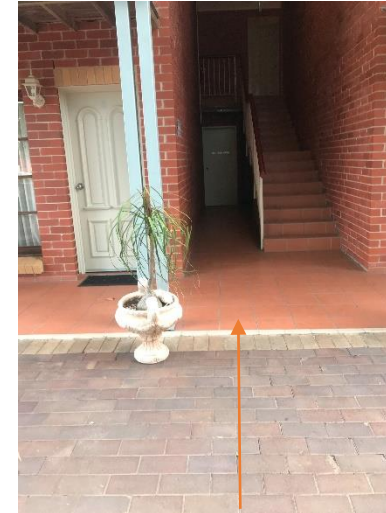
The toilets inside the pub are not accessible



There is an accessible toilet behind the pub in the Saleyards Motel

The toilet has a hand-rail next to it

You can get a key from the bar staff



There is an entry next to the stairs

You might need help with the pull door



The path to the accessible toilet from the car park

The car park is used as a pathway to get to the accessible toilet



Accessible path to the pub



Jamberoo Bowling and Recreational Club

[Get a map of Jamberoo Bowling and Recreational Club here.](#)



1 accessible car parking space
in the public car park



The bathroom sink
has a twist tap



The ramp into the club is a
little bit steep – you might
need help using it



At the entry:

- it's a little bit steep
- there is a mat to stop you slipping
- there are automatic doors



There is a grab-rail:

- next to the toilet
- behind the toilet

Public toilets



Saddleback Mountain Lookout toilets

The Saddleback Mountain Lookout public toilets are open 24 hours a day. There are no accessible toilets.

[Find out more about how accessible Saddleback Mountain Lookout is here.](#)

[Get a map of Saddleback Mountain Lookout here.](#)



The path to the toilet is a little bit steep – you might need help using it



The path to the toilet is a little bit steep – you might need help using it



The bathroom sink has a twist tap



Jerrara Dam Reserve toilets

The Jerrara Dam Reserve public toilets are open 24 hours a day. There are no accessible toilets.



Accessible path
with bollards



There is a grab-rail:

- next to the toilet
- behind the toilet



Entry



The bathroom sink
has a push tap



Kevin Walsh Oval toilets

The Kevin Walsh Oval accessible toilets and adult change facility are open 24 hours a day.

[Find out more about how accessible Kevin Walsh Oval is here.](#)

[Find out more about the adult change table at Kevin Walsh Oval here.](#)

[Get a map of Kevin Walsh Oval here.](#)



There is a grab-rail:

- next to the toilet
- behind the toilet



There is an adult change table.



The bathroom sink has a push tap



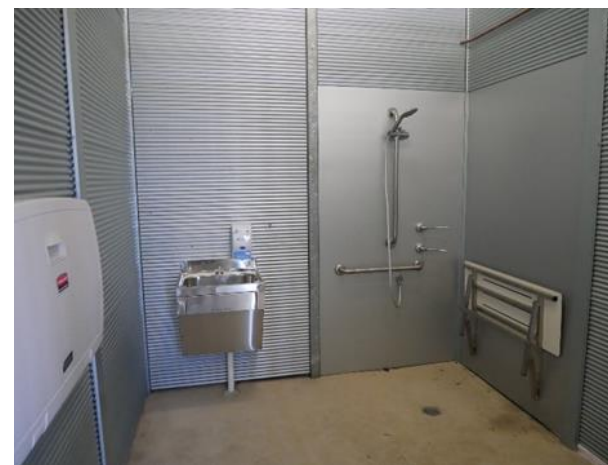
The path goes all the way from the car park to the accessible toilets. You may have to cross the carpark depending on where you park.



Jamberoo Pool toilets



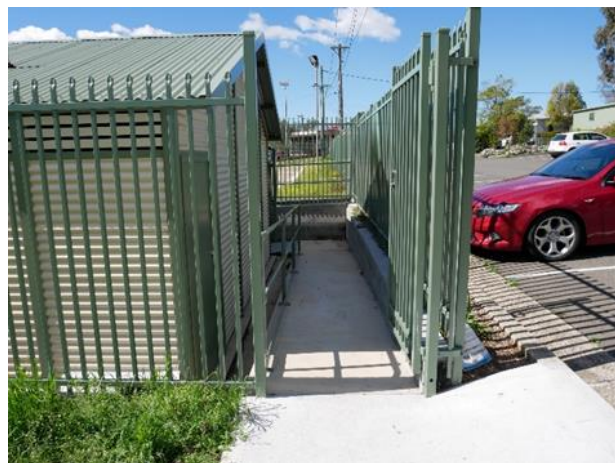
1 accessible car parking space



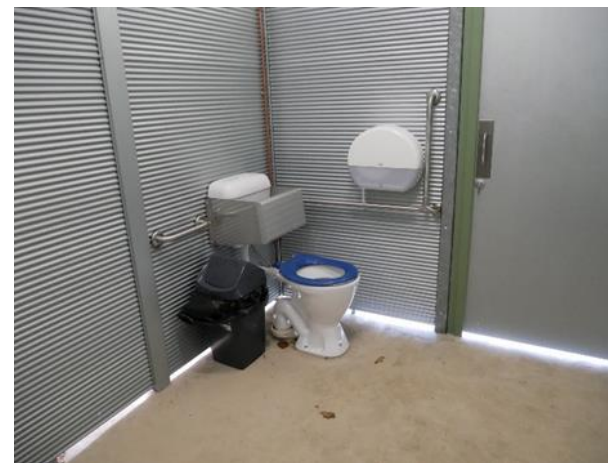
The shower has a:

- seat
- grab-rail

The bathroom sink has a push tap



A ramp with a handrail on 1 side



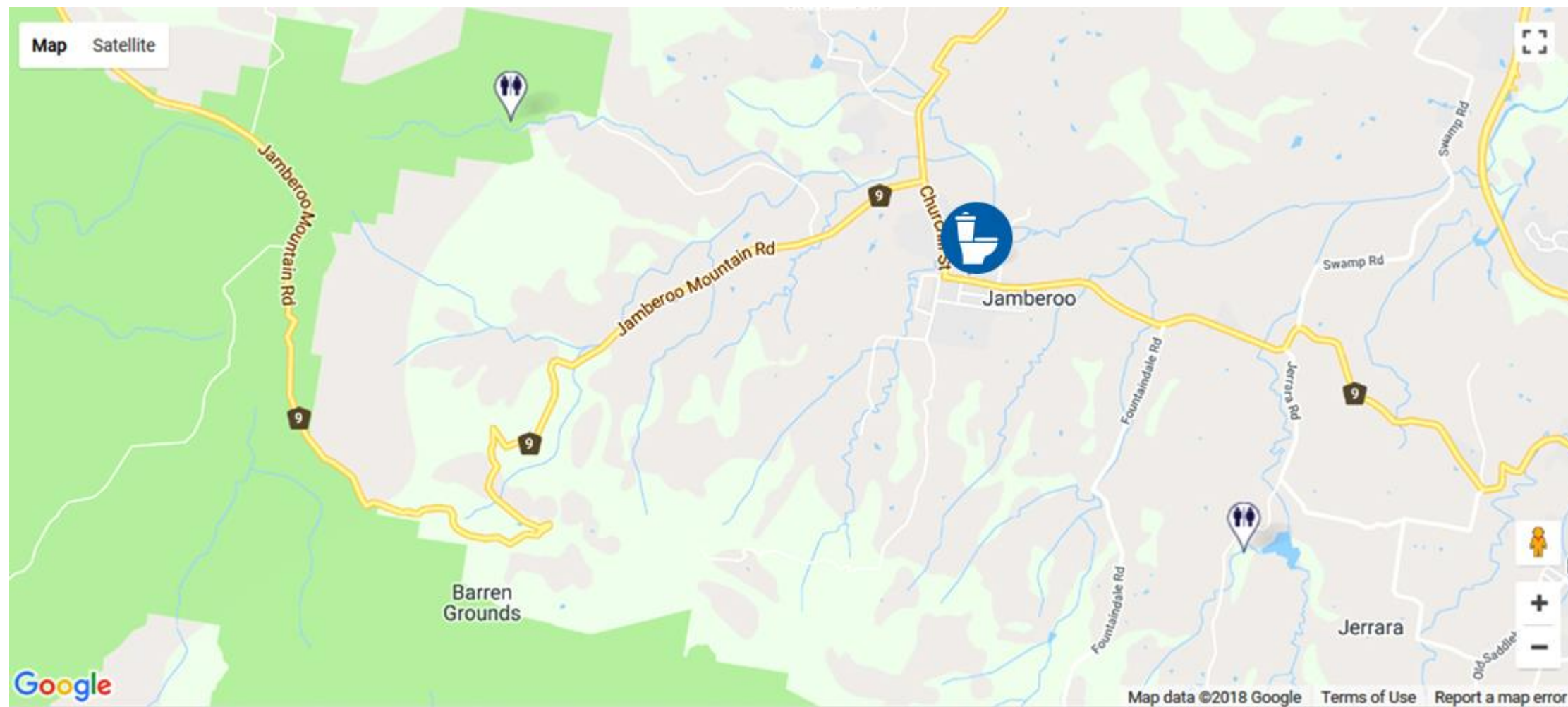
There is a grab-rail:

- next to the toilet
- behind the toilet



A map of accessible toilets in Jamberoo

For more information, go to the [National Public Toilet Map website](#).





Popular places to visit

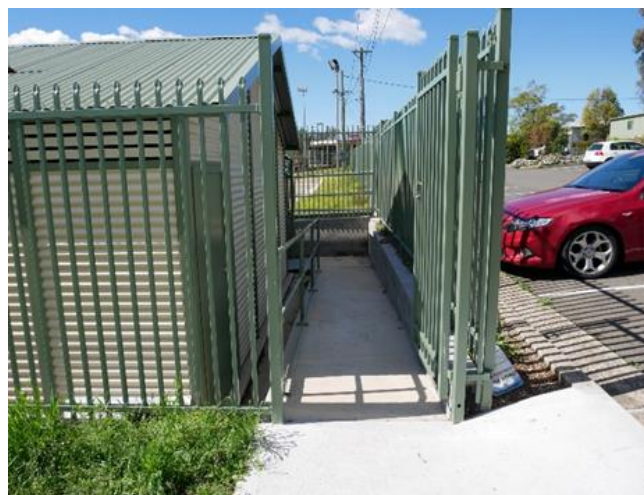


Jamberoo Pool

[Find out more about the accessible toilets at Jamberoo Pool here.](#)



1 accessible car parking space



A ramp with a handrail on 1 side



The pool has an electric lift



Reid Park

The closest toilets are at Kevin Walsh Oval. [Find out more about the accessible toilets at Reid Park here.](#)

[Get a map of Reid Park here.](#)



There are no accessible car parking spaces



Accessible path to the park and barbecue area



Accessible undercover picnic tables



Accessible picnic table

The playground is connected to the path



The path doesn't go all the way to the gazebo



Saddleback Mountain Lookout

[Find out more about the accessible toilets at Saddleback Mountain Lookout here.](#)

[Get a map of Saddleback Mountain Lookout here.](#)

Northern lookout



There are no accessible car parking spaces



Accessible path



Accessible lookout



Saddleback Mountain Lookout

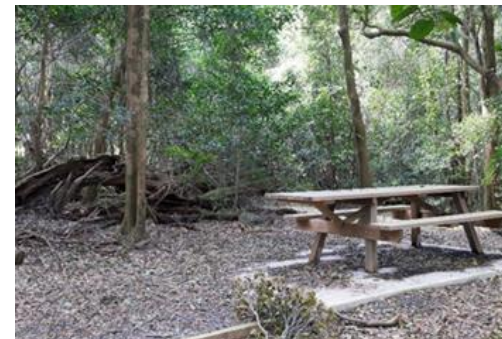
Southern lookout



There are no accessible car parking spaces



The path doesn't go all the way to the lookout



Accessible picnic table



The stairs to the lookout are steep

Western lookout



There are no accessible car parking spaces



There is a gate blocking part of the path



The path to the lookout is a little bit steep – you might need help using it



Accessible lookout



Jamberoo Lookout

[Get a map of Jamberoo Lookout here.](#)



Accessible path from the parking



Accessible lookout

★ More information about accessibility in Jamberoo



- Jamberoo Town Centre has 2 main carpark. Only 1 has an accessible car parking space.
- Allowrie Street has places where you can cross the road. There is only 1 pedestrian crossing.
- The path on Allowrie Street is slippery when it is wet.



Main street of Gerringong



1 accessible car parking space



A carpark off of the main street



The image displays a Google Maps interface with a route highlighted in green and red. The route starts at Jerrara Creek, goes south on Swamp Rd, then east on Swamp Rd, and finally south on Swamp Rd towards Kiama Downs. The map includes labels for roads like Swamp Rd, Jerrara Creek, and Minnamurra River. The interface also shows a search bar, a sign-in button, and a scale bar.



Riding for the Disabled (Jerrara)

[Find more information at the Riding for the Disabled Facebook page.](#)

Illawarra Fly Treetop Walk

[Find more information at the Illawarra Fly Tree Top Walk website.](#)

The Illawarra Fly Tree Top Walk has:

- accessible car parking close to the Visitors Centre
- a wheelchair accessible Visitors Centre
- accessible toilets
- lifts to the treetop walk for wheelchairs
- free entry for carers.





Minnamurra Rainforest and Budderoo National Park

[Find more information at the NSW National Parks and Wildlife Service website.](#)

Minnamurra Rainforest is wheelchair accessible and has:

- accessible car parking spaces
- accessible toilets
- an accessible picnic area and café.

Carrington Falls

[Find more information at the NSW National Parks and Wildlife Service website.](#)

If you are using a wheelchair, you can get help to get to the picnic area and lookout.



Your council, your community

