



Accessibility in the Kiama Local Government Area – Minnamurra & Kiama Downs

Your guide to accessibility in your community

Your council, your community





How to use this guide

We made this guide to help you work out places in the Kiama Local Government Area that are **accessible**.

When something is accessible, it means you can enter a place or building. Or, you can use a service or get information.

We have worked out how accessible places are and put them in different groups.

These groups are:



- easy – accessible



- medium – you might need help from someone else



- hard – you will need help from someone else



- not accessible.

You might find some places easier or harder to get to than what this guide says. Not all places will be fully accessible. This guide will help you decide if a place is accessible to you.

Text that is [blue and underlined](#) is linked to more information.



Contents



Kiama Local Government Area



[Wheelchairs for the beach](#)



[Defibrillators](#)



[Holiday parks](#)



[Cemeteries](#)



[Paths where you can cycle](#)

Kiama Downs and Minnamurra



[Transport](#)



[General services](#)



[Sports and recreation](#)



[Public toilets](#)



[Popular places to visit](#)



[Medical services](#)

Disclaimer

The term 'Accessible' is used to indicate accessible features of the Kiama Local Government Area (LGA). It is not intended to describe the facilities and features as fully compliant with the requirements of the Disability (Access to Premises) Standard 2010, the Building Code of Australia and/or related Access and Mobility Australian Standards. The information provided in this document is to help you assess your own capacity to access or use the various features/facilities.



Kiamia Local Government Area



Wheelchairs for the beach



- There are 2 places where you can get a wheelchair to use on the beach in Kiama. There is:
 - 1 wheelchair at Seven Mile Beach Holiday Park
 - 1 wheelchair at Surf Beach Life Saving Club.
- If you need a wheelchair to get onto Seven Mile Beach, you can ask staff at the holiday park office.
- If you need a wheelchair to get onto Surf Beach, you can ask:
 - a lifesaver
 - someone at the kiosk.





Defibrillators



A defibrillator is a machine that helps people who are having problems with their heart.

It uses electricity to:

- fix a person's heartbeat if it is too slow or too fast
- start a person's heart again if it has stopped.

On the right is a list of places where you can find a defibrillator if you need one.



Summer Site Location	Winter Site Location
Kendall's Beach Life Guards	Kendall's Holiday Park Office
Jones Beach Life Guards	Life Guards Jet Ski
East Beach Life Guards	Kiama Harbour Cabins Office
Bombo Beach Life Guards	Surf Beach Holiday Park Office
Seven Mile Beach Life Guards	Seven Mile Holiday Park Office
Life Guard Vehicle	Life Guards Vehicle
Surf Beach Life Guard	Surf Beach Life Guard Office
Werri Beach Life Guards	Werri Beach Holiday Park Office
Old Council Chambers Building	Old Council Chambers Building
Kiama Council Administration Building	Kiama Council Administration Building
Kiama Community Centre	Kiama Community Centre
Jamberoo Pool	Kiama Leisure Centre
Kiama Showground Pavilion	Kiama Showground Pavilion
Kiama Library	Kiama Library
Kiama Council Depot Stores	Kiama Council Depot Stores
Minnamurra Waste & Recycling Depot	Minnamurra Waste & Recycling Depot
Kiama Leisure Centre	Kiama Leisure Centre



Holiday parks



We have put together some information about holidays parks in Kiama. This includes photos and information about their accessibility.

For more information, please visit www.kiamacoast.com.au

Kiama Harbour Cabins

Cabin 9 is in the medium accessible group. It has:



1 accessible car parking space outside the cabin



A ramp to get into the cabin



Outside barbecue area



Lounge room

Kiama Harbour Cabins



The kitchen is not accessible



Dining area



Bedroom



The shower has a:

- seat
- grab-rail



The bathroom sink has
a twist tap



There is a grab-rail:

- next to the toilet
- behind the toilet



Bunkbeds



Ramps at the doorways



Kendalls on the Beach Holiday Park

There are 2 cabins in the medium accessible group. The photos below are of Cabin 7.



There is parking for Cabin 7



There is a ramp to the cabin



Outside barbecue area



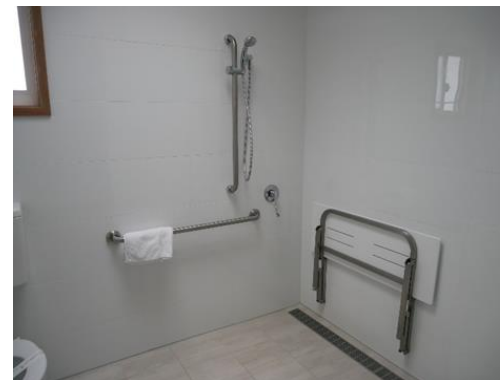
Lounge and dining area



The kitchen is not accessible



There is a grab-rail next to toilet



The shower has a:

- seat
- grab-rail



The bathroom sink has a push tap



Surf Beach Holiday Park

Surf beach has one easy accessible cabin, although not accessibility approved many other cabins have accessibility features.



Accessible ramp to cabin



Accessible kitchen sink



Bench seat in shower
Grab-rails in both shower and toilet areas
Removable shower head



Dining and kitchen area



Outdoor balcony area



Lions Cottage

Lions Cottage is on Shoalhaven Street in Kiama. It is managed by the Lions Clubs of Kiama, Gerringong and Minnamurra.

You can find out more by emailing hello@lionscottage.com.au



A ramp from the car park to the cottage



Bedroom



There is a grab-rail:

- next to the toilet
- behind the toilet



The shower has a grab-rail

There are lots of other accommodation providers in Kiama that have accessible options.

You can contact the Kiama Visitor Information Centre for more information – **1300 654 262**.



Cemeteries



We have put together some information about cemeteries in the Kiama area. This includes photos and information about their accessibility.

Bombo Cemetery

[You can get a map of the Bombo Cemetery here.](#)



There is no accessible parking



The road is also used as a path



Some of the road and all of the path to the accessible toilet has a gravel surface



There is a grab-rail:

- next to toilet
- behind toilet



There is a button under the sink that you have to push to use the water

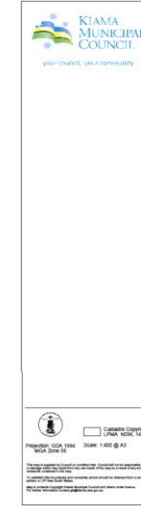
Jamberoo Cemetery



There is no parking at Jamberoo cemetery



The accessible path doesn't go all the way around the cemetery



This is a photo of Jamberoo Cemetery from the sky

Gerringong Cemetery



[You can get a map of Gerringong Cemetery here.](#)



There is 1 accessible car parking space



There are some accessible paths outside the cemetery



Inside the cemetery it is steep and there is no accessible path



There is an accessible path to the flagpole



Paths where you can cycle





Kiama Downs and Minnamurra





About this section

We have put together some information about accessibility in Kiama Downs and Minnamurra. This includes photos and information about:

- transport
- general services, like shopping centres
- sport and recreation places, like the Gainsborough Oval
- public toilets
- popular places to visit in Kiama Downs and Minnamurra, like James Oats Reserve
- accessible parking.

Transport



Minnamurra Train Station

[Get a map of Minnamurra Train Station here.](#)

The Minnamurra Train Station has:

- a guard who can help you
- a boarding ramp
- a hearing loop system
- places where you can rest
- a ramp with handrails.



There are no accessible car parking spaces



Path that leads to the road



The ramp to get to the train platform



There are no colour-contrasted tactile indicators on the train platform



General services



Fredericks IGA Kiama Downs

[Get a map of Fredericks IGA Kiama Downs here.](#)



2 accessible car parking spaces



If you have parked in an accessible car parking space, you need to cross the road to get to the IGA



Accessible path at the IGA



Automatic doors



Gainsborough Centre

[Get a map of the Gainsborough Centre here.](#)

Supermarket



There are no accessible car parking spaces



Accessible path to the supermarket and the carpark



Push door

Fruit market



There are no accessible car parking spaces



Accessible path to the fruit market



Post Office

At the Post Office:

- there are no accessible car parking spaces
- there is a barrier kerb at the car parking

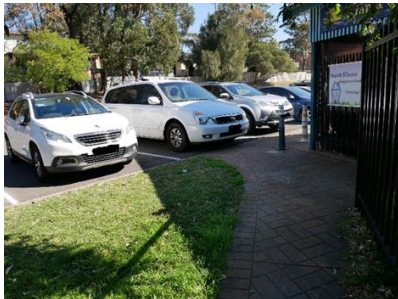


Barrier kerb at the car parking



Push door

North Kiama Neighbourhood Centre



At the Neighbourhood Centre:

- there are no accessible car parking spaces
- there is a barrier kerb at the car parking



Accessible path to the toilet



Grab-rail next to the toilet



The bathroom sink has a twist tap



Playground



Sports and Recreation



Gainsborough Oval

[Get a map of the Gainsborough Oval here.](#)



There are no accessible car parking spaces



Accessible path



The oval



Public toilets



Jones Beach toilets

Jones Beach public toilets are open from 6.00 am to 9.30 pm.

[Find out more about how accessible Jones Beach is here.](#)

[Get a map of Jones Beach here.](#)

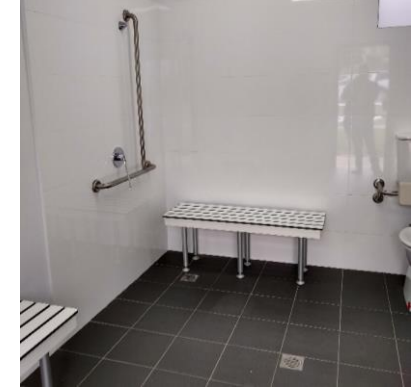


The pathway to the accessible toilet



There is a grab rail:

- next to the toilet
- behind the toilet

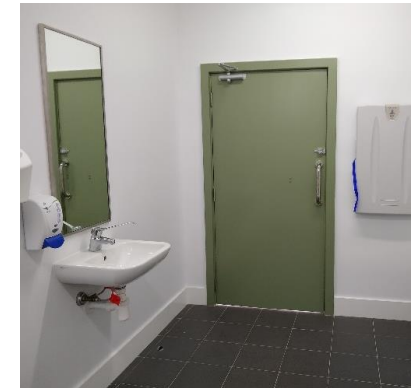


The shower has a:

- seat
- grab-rail



The bathroom sink has a push tap



Push door



North Street Reserve toilets

North Street Reserve public toilets are open 24 hours a day.

[Find out more about how accessible North Street Reserve is here.](#)

[Get a map of North Street Reserve here.](#)



The pathway to the accessible toilet



1 accessible car parking space



Toilet has grab rail:

- next to the toilet
- behind the toilet



There is a button under the sink that you have to push to use the water



James Oats Reserve toilets

James Oats Reserve public toilets are open 24 hours a day.

[Find out more about how accessible James Oats Reserve is here.](#)

[Get a map of James Oats Reserve here.](#)



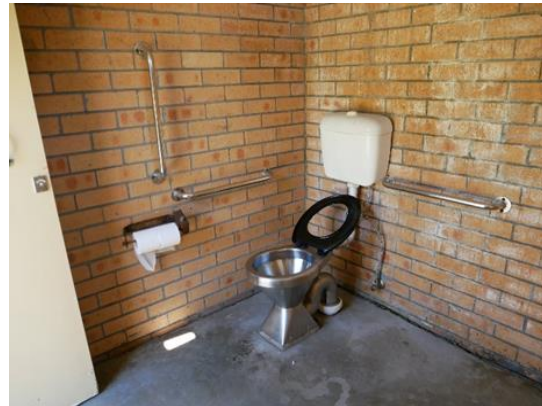
Accessible pathway from the car park to all toilets



To get to the toilet, follow the path around to the back of the building and down the side

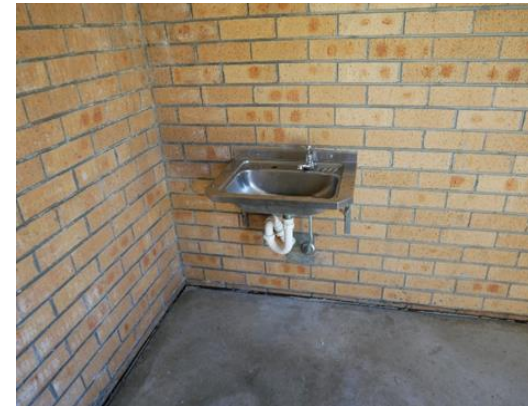


The path to the accessible toilet on the side of the building



There is a grab-rail:

- next to the toilet
- behind the toilet



The bathroom sink has a twist tap



Trevethan Reserve toilets

Trevethan Reserve public toilets are open 24 hours a day.

[Get a map of Trevethan Reserve here.](#)



1 accessible car parking space



Accessible path to the toilets



A ramp with handrails on both sides



- In the toilet there is :
- a button below the sink that you have to push to use the water
 - a baby change table in the bathroom



Toilet



Ambulant toilet with grab-rails on both sides

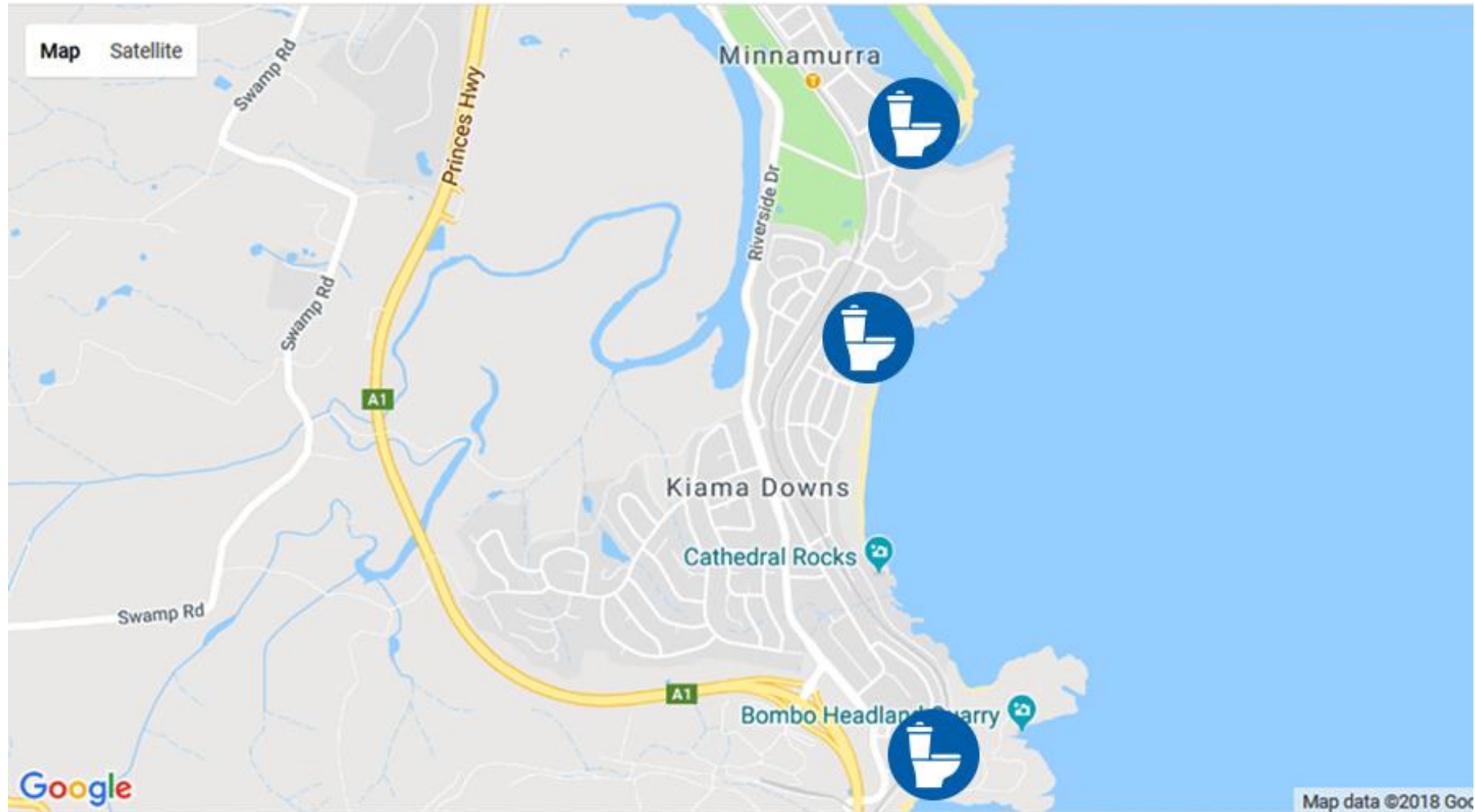


There is a button below the sink that you have to push to use the water



A map of accessible toilets in Kiama Downs

For more information, go to the [National Public Toilet Map website](#).





Popular places to visit



James Oats Reserve

[Find out more about James Oats Reserve here.](#)

[Find out more about the accessible toilets at James Oats Reserve here.](#)

[Get a map of James Oats Reserve here.](#)



Accessible path
to the showers



1 accessible car
parking space



There is no accessible
path to the picnic tables



Boat ramp



The playground is not
connected to the path



Jones Beach Park

[Find out more about the accessible toilets at Jones Beach Park here.](#)

[Find out more about Jones Beach Park here.](#)

[Get a map of Jones Beach Park here.](#)



There are no accessible car parking spaces



Accessible path to the picnic table



Accessible path to the picnic table



North Street Reserve

[Find out more about the accessible toilets at North Street Reserve here.](#)

[Get a map of North Street Reserve here.](#)



1 accessible car parking space



There is no accessible path
to the reserve



Seat



Rangoon Reserve

The closest toilets are at North Street Reserve. [Find out more about the accessible toilets at North Street Reserve here.](#)

[Get a map of Rangoon Reserve here.](#)



Picnic table



Stairs to the river with
a handrail on 1 side



1 accessible car
parking space



Seat



There is no accessible pathway



Thornett Way, Gainsborough

[Get a map of Thornett Way, Gainsborough here.](#)



There are no accessible car parking spaces



Accessible path



Basketball court



The playground is not connected to the path



Playground



Picnic table

Medical services



Kiama Downs Medical Practice

[Get a map of Kiama Downs Medical Practice here.](#)



A ramp to the front entry with a push door



A ramp to the back entry



1 accessible car parking space at the back of the building

Kiama Downs Guardian Pharmacy

[Get a map of Kiama Downs Guardian Pharmacy here.](#)



The pathway to the front door of the pharmacy is paved



1 accessible car parking space across the road

Your council, your community

